

	PRODUCT	PAG.
	HYGIENIC DESIGN LINE	
	SMALL CABINETS QSH	148
	SMALL CABINETS DEH AND PEH	150
	SMALL CABINETS BKH	152
	SMALL CABINETS BKHP	154
	SMALL CABINETS CXH	158
	Accessories for Hygienic Design Line	160

7

HYGIENIC DESIGN LINE



It is commonly thought that everything to do with the pharmaceutical and food sector is something we can undoubtedly be absolutely sure about and that foodstuffs, not to mention pharmaceuticals, are produced and treated according to levels of “**Superior Quality**“, so as to guarantee to consumers that the places and equipment involved in the production chain have been engineered in an optimal manner for their intended use and that all necessary measures have been taken in order to guarantee the safety and wholesomeness of the food products.

We would also like to believe that the work of each individual worker, whatever his or her position, is carried out in the awareness of those human and professional ethics that should be applied by all those who are responsible for the safeguarding of our wellbeing and health.

This is what we would like to believe and what we expect both for ourselves and for future generations.

It is clear to all of us that the fundamental aim is the **prevention of microbial contamination of food products**.

Such contamination may originate from raw materials, but a product could also be contaminated by micro-organisms during processing and packaging. If the design characteristics of the machinery are inadequate, this makes for difficulty in cleaning in-between slots and cracks where residues may be trapped, thus enabling micro-organisms to survive and proliferate leading to potential cross-contaminations of subsequent product batches.

Cleaning is **thus a question of great importance**. Machinery that is difficult to clean will require more rigorous procedures, the use of more aggressive chemicals, and extended cleaning and decontamination cycles. This all entails higher costs, lower production and a shorter life for the machinery.

One of the materials most commonly utilised in the manufacture of machinery for the food industry is stainless steel, which offers excellent protection against corrosion, total lack of toxicity, resistance to both low and high temperatures, good workability and lifetime.

The series 300 austenite steels, such as TYPE 304 - DIN 1.4301, TYPE 304L – DIN1.4307 and TYPE 316L – DIN1.4404, provide an excellent guarantee in most applications.

Surface finishings are just as important. The smoother the surface, the lower the risks of clinging dirt and hence the easier it is to clean.

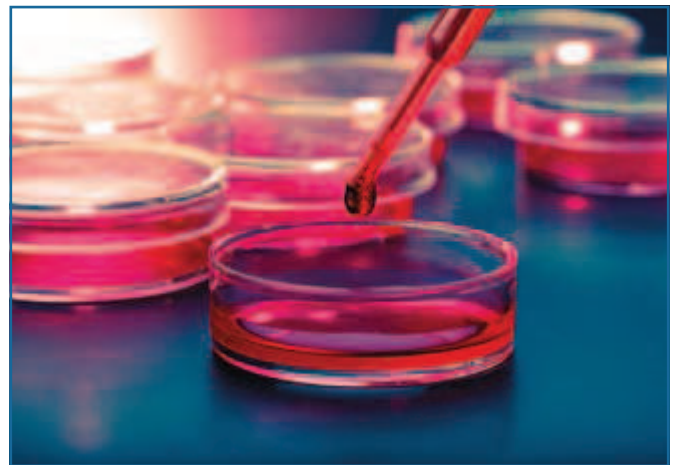
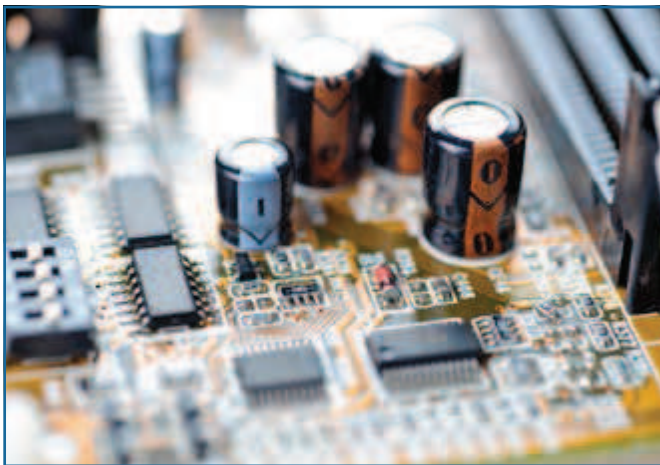
Also of fundamental importance is the use of Polymeric and/or Elastomer materials having specific properties of resistance to chemicals, operating temperatures, steam, mechanical stress, and hydrophobicity, cleanability and resistance to abrasion, to name but a few of the stringent characteristics required for use in food and pharmaceutical environments.

For its products Ilinox utilises silicone rubber, which is suitable for applications up to 180°C. To this end, machines are designed, manufactured and installed in accordance with criteria of absolute hygiene so as to avoid negative effects on the quality of foodstuffs or pharmaceuticals, following guidelines giving fundamental indications as to how to tackle the above mentioned problems.

First and foremost among these are the **EHEDG Guidelines (European Hygienic Engineering & Design Group)**, a Body composed of a panel of experts who work together to define the criteria for the sanitary planning of the machines, followed by the well known FDA (Food and Drugs Administration) Guidelines, and those of ASME BPE (Bio Processing Equipment), to name but a few of the most important and authoritative.

Improvisation and approximation have never led to satisfactory results; only those companies that are diligent and well prepared are suitable partners in your requirements of “Superior Quality”.

Ilinox has always been mindful of all these considerations, above all when the interests of everyone are at stake and when your expectations of quality do not allow you to accept any compromise whatsoever.





REMOVABLE GASKET



The gasket, made of blue silicon to point out filth, can be removed and sanitized.

NO GAPS



Door protection roof, with flush gasket, rounded corners, no gaps.

SLOPING ROOF



Built-in roof, 30° slope, to prevent build-up of filth and facilitate drainage of liquids.

EASY CLEANING



The distance between the sloping roof and the door does not create gaps while facilitating cleaning.

SMALL CABINETS QSH

The small cabinets of the QSH Line meet the requirements for use in food, dairy, pharmaceutical industries as well as in all those environments where hygienic-sanitary regulations must absolutely be complied with (Directive on machinery 2006/42/EC DIN EN 1672-2- 2005, Documents EHEDG 8 E 13).

Material: s/s EN 1.4307 (TYPE 304L) or, on request, EN 1.4404 (TYPE 316L) satin-finish scotch brite protected.

Enclosure obtained from a single sheet, shaped by multiple bending of the front edge; 30° slope roof to prevent objects being put on it and to facilitate cleaning and liquid drainage.

Full door (max. weight admitted 12 kg).

Doorlock without recesses and/or gaps; outside surfaces made of EN 1.4404 (TYPE 316L) s/s, shaped as per sanitary regulations DIN EN 1672-2 and DIN EN 14159; opening by removable key, zama execution.

S/s inner hinges: 120° opening according to CEI EN 60204-1 recommendation.

Seal removable, cleanable and sterilizable, made of moulded silicone.

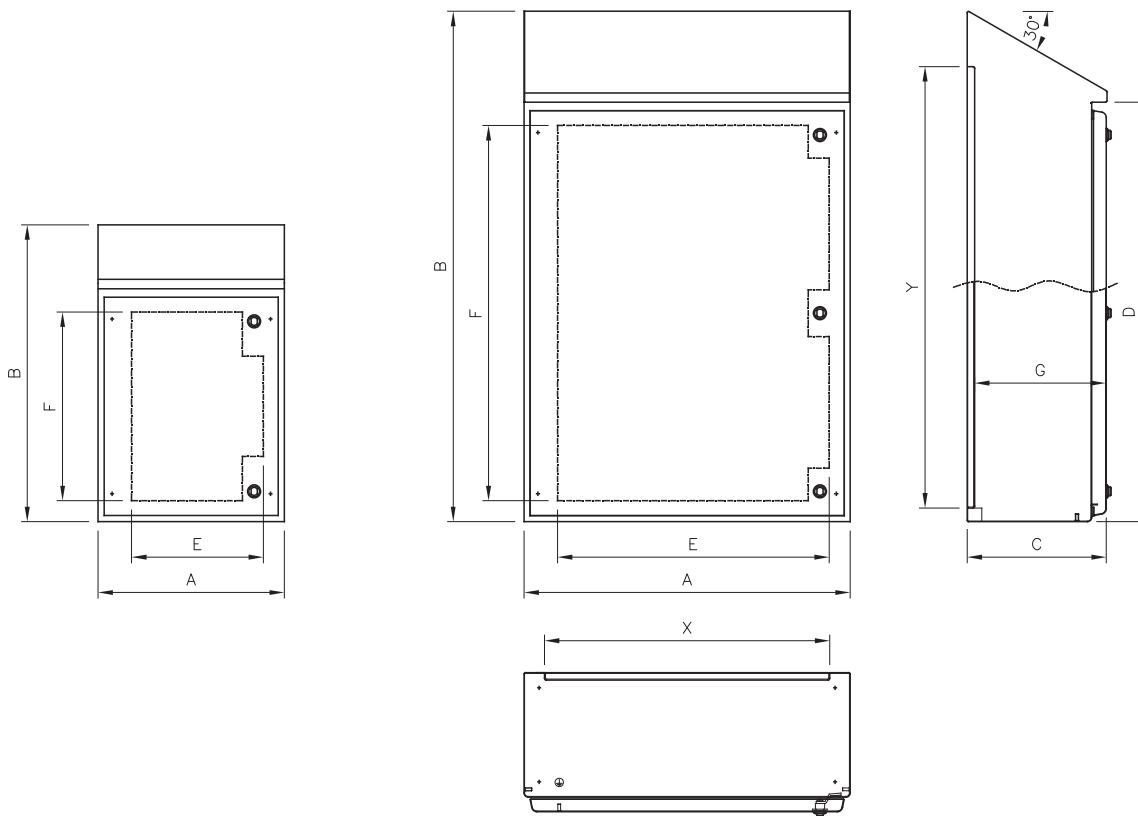
Inner plate made of galvanized sheet sendzimir EN 10142 secured to the bottom of the enclosure by threaded pins M8 welded inside the enclosure.

Prearranged for earthing as per regulations in force.

The back of the enclosure has 4 blind holes for easy application of the wall mount system.

Fairlead plate not foreseen.

Protection degree: IP66 as per EN 60 529.



IK10

IP66

EN 60 529



TYPE
NEMA 4X, 4, 12, 1

Standard UL508A - UL50
Standard 250



Low voltage directive 2014-35-UE

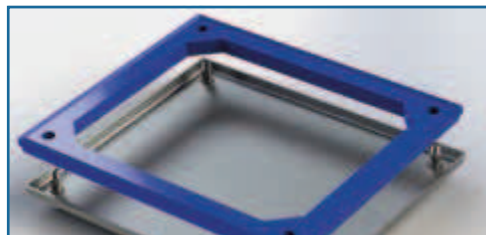


ITEM	OUTSIDE							MATERIAL	THICKNESS		INNER PLATE		AVAILABILITY
	A	B	C	D	E	F	G		ENCLOSURE	DOOR	X	Y	
QSH45/304	400	637	200	500	280	405	180	TYPE 304L	15/10	1	312	547	YES
QSH55/304	500	637	200	500	380	405	180	TYPE 304L	15/10	15/10	412	547	YES
QSH66/304	600	737	200	600	480	505	180	TYPE 304L	15/10	15/10	512	647	YES
QSH67/304	600	916	250	750	480	655	230	TYPE 304L	15/10	15/10	512	797	YES
QSH79/304	700	1095	300	900	580	805	280	TYPE 304L	15/10	15/10	612	1005	YES
QSH88/304	800	990	300	800	680	705	280	TYPE 304L	15/10	15/10	712	905	YES
QSH612/304	600	1390	300	1200	480	1105	280	TYPE 304L	15/10	15/10	512	1305	YES
QSH616/304	600	1845	400	1600	480	1505	380	TYPE 304L	15/10	15/10	512	1650	on demand
QSH810/304	800	1190	300	1000	680	905	280	TYPE 304L	15/10	15/10	712	1105	YES
QSH812/304	800	1390	300	1200	680	1105	280	TYPE 304L	15/10	15/10	712	1305	YES
QSH816/304	800	1845	400	1600	680	1505	380	TYPE 304L	15/10	15/10	712	1650	on demand
QSH45/316	400	637	200	500	280	405	180	TYPE 316L	15/10	15/10	312	547	on demand
QSH55/316	500	637	200	500	380	405	180	TYPE 316L	15/10	15/10	412	547	on demand
QSH66/316	600	737	200	600	480	505	180	TYPE 316L	15/10	15/10	512	647	on demand
QSH67/316	600	916	250	750	480	655	230	TYPE 316L	15/10	15/10	512	797	on demand
QSH79/316	700	1095	300	900	580	805	280	TYPE 316L	15/10	15/10	612	1005	on demand
QSH88/316	800	990	300	800	680	705	280	TYPE 316L	15/10	15/10	712	905	on demand
QSH612/316	600	1390	300	1200	480	1105	280	TYPE 316L	15/10	15/10	512	1305	on demand
QSH616/316	600	1845	400	1600	480	1505	380	TYPE 316L	15/10	15/10	512	1650	on demand
QSH810/316	800	1190	300	1000	680	905	280	TYPE 316L	15/10	15/10	712	1105	on demand
QSH812/316	800	1290	300	1200	680	1105	280	TYPE 316L	15/10	15/10	712	1305	on demand
QSH816/316	800	1845	400	1600	680	1505	380	TYPE 316L	15/10	15/10	712	1650	on demand

UL certification to be requested with the order.



Customized convex blind nut with under head special design for anti-loss purpose equipped with gasket. Threaded path length foreseen to guarantee a certain mechanical stop, to avoid excessive gasket compression.



The gasket, made of blue silicon to point out filth, can be removed and sanitized. Calibrated softness kept in place by the special screw.



The case can be used both for the industrial PE/DE line as per PEH/DEH hygienic line.

PUSHBUTTONS “PEH” AND JUNCTION BOXES “DEH”

EN 1.4307 (TYPE 304L) s/s execution, thickness 12/10, fine satin-finish. On request, they can be made from other types of s/s and customized to meet specific requirements.

Cutting-edge welding procedures enable to maintain unaltered the chemical formulation of the material thus avoiding corrosion in the weld areas.

The cover is secured by screws provided with sealing and leak-proof washers.

Gasket made in blue silicon, Seal removable, cleanable and sterilizable.

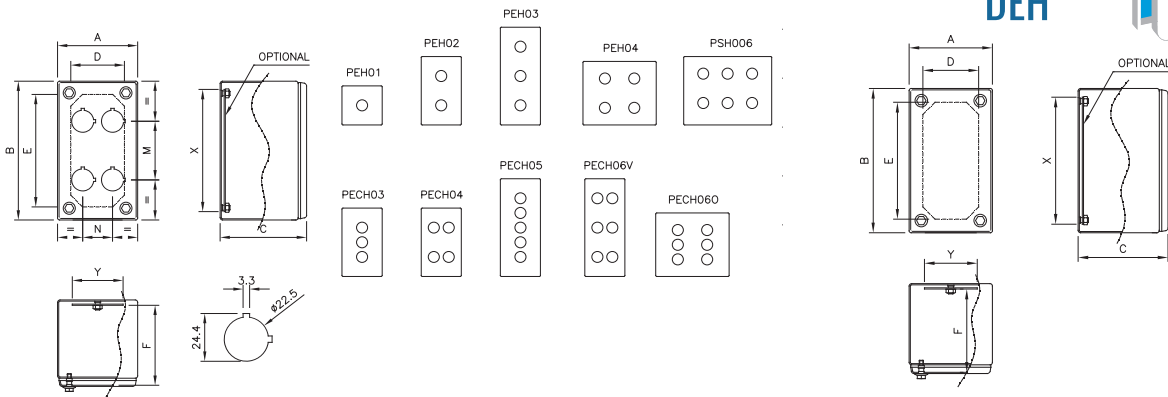
Protection degree IP69k when appropriate components are properly installed, as per CEI EN 60529 rules.

Pre-arrangement for earthing in compliance with the applicable rules.

All boxes feature stud bolts to secure the DIN bar, if any.

The PEH Series features drilled cover to accommodate the Ø 22,5 standardized push-button panel.

Inner plate in sendzimir execution, available on demand from models PEH02, DEH02, PECH03 and PECH04.



PEH

IK07 IP66 IP69K EN 60 529



TYPE NEMA 4X, 4, 12, 1

Standard UL508A - UL50 Standard 250



ITEM	OUTSIDE SIZES			DOOR USEFUL SIZE			CENTRE DISTANCE		MATERIALS			INNER PLATE		
	A	B	C	D	E	F	M	N	GASKET	TYPE	THICKNESS	ITEM	X	Y
PEH01/304	82	82	89	55	55	81	-	-	moulded silicone	Type 304L	1,2 mm	-	-	-
PEH02/304	82	142	89	55	115	81	60	-	moulded silicone	Type 304L	1,2 mm	PI02	125	52
PECH03/304	82	142	89	55	115	81	30	-	moulded silicone	Type 304L	1,2 mm	PI02	125	52
PECH04/304	82	142	89	55	115	81	60	30,5	moulded silicone	Type 304L	1,2 mm	PI02	125	52
PEH03/304	82	202	89	55	175	81	60	-	moulded silicone	Type 304L	1,2 mm	PI03	185	52
PECH05/304	82	202	89	55	175	81	30	-	moulded silicone	Type 304L	1,2 mm	PI03	185	52
PECH06V/304	82	202	89	55	175	81	60	30,5	moulded silicone	Type 304L	1,2 mm	PI03	185	52
PEH04/304	132	152	89	105	125	81	60	60	moulded silicone	Type 304L	1,2 mm	PI04	135	102
PECH060/304	132	152	89	105	125	81	60	30	moulded silicone	Type 304L	1,2 mm	PI04	135	102
PEH06/304	190	150	125	150	110	115	60	50	moulded silicone	Type 304L	1,2 mm	PI006	172	110
PEH01/316	82	82	89	55	55	81	-	-	moulded silicone	Type 316L	1,5 mm	-	-	-
PEH02/316	82	142	89	55	115	81	60	-	moulded silicone	Type 316L	1,5 mm	PI02	125	52
PECH03/316	82	142	89	55	115	81	30	-	moulded silicone	Type 316L	1,5 mm	PI02	125	52
PECH04/316	82	142	89	55	115	81	60	30,5	moulded silicone	Type 316L	1,5 mm	PI02	125	52
PEH03/316	82	202	89	55	175	81	60	-	moulded silicone	Type 316L	1,5 mm	PI03	185	52
PECH05/316	82	202	89	55	175	81	30	-	moulded silicone	Type 316L	1,5 mm	PI03	185	52
PECH06V/316	82	202	89	55	175	81	60	30,5	moulded silicone	Type 316L	1,5 mm	PI03	185	52
PEH04/316	132	152	89	105	125	81	60	60	moulded silicone	Type 316L	1,5 mm	PI04	135	102
PECH060/316	132	152	89	105	125	81	60	30	moulded silicone	Type 316L	1,5 mm	PI04	135	102
PEH06/316	190	150	125	150	110	115	60	50	moulded silicone	Type 316L	1,5 mm	PI006	172	110

UL certification to be requested with the order.

DEH

IK07 IP66 IP69K EN 60 529



TYPE NEMA 4X, 4, 12, 1

Standard UL508A - UL50 Standard 250

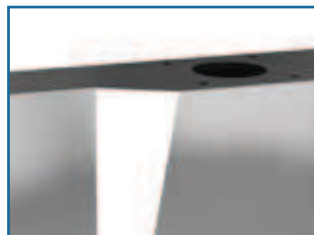


ITEM	OUTSIDE SIZES			DOOR USEFUL SIZE			MATERIALS			INNER PLATE		
	A	B	C	D	E	F	GASKET	TYPE 304L	THICKNESS	ITEM	X	Y
DEH01/304	82	82	89	55	55	81	moulded silicone	Type 304L	1,2 mm	-	-	-
DEH02/304	82	142	89	55	115	81	moulded silicone	Type 304L	1,2 mm	PI02	125	52
DEH03/304	82	202	89	55	175	81	moulded silicone	Type 304L	1,2 mm	PI03	185	52
DEH04/304	132	152	89	105	125	81	moulded silicone	Type 304L	1,2 mm	PI04	135	102
DEH06/304	190	150	125	150	110	115	moulded silicone	Type 304L	1,2 mm	PI006	172	110
DEH01/316	82	82	89	55	55	81	moulded silicone	Type 316L	1,5 mm	-	-	-
DEH02/316	82	142	89	55	115	81	moulded silicone	Type 316L	1,5 mm	PI02	125	52
DEH03/316	82	202	89	55	175	81	moulded silicone	Type 316L	1,5 mm	PI03	185	52
DEH04/316	132	152	89	105	125	81	moulded silicone	Type 316L	1,5 mm	PI04	135	102
DEH06/316	190	150	125	150	110	115	moulded silicone	Type 316L	1,5 mm	PI006	172	110

UL certification to be requested with the order.



Smooth rounded surfaces, designed for facilitate cleaning without grooves where filth might deposit and remain.



The state of art of the cleanable and design style.



The gasket, made of blue silicon to point out filth, can be removed and sanitized

CONTROL BOX HYGIENIC SERIES BKH

EN 1.4307 (TYPE 304L) s/s execution, finely satin-finished and protected.

Enclosure obtained from a single sheet, thickness 15/10 shaped by multiple bends of the rear edge, door with radial corners.

Enclosures drilled for the assembling of articulated arms type TJ-TS-TL with rotary joint code GKS.

Full door, hinged, side lock to take maximum advantage of the drilling space.

Inner plate not provided.

Ergonomic grip handles, TYPE 304 s/s.

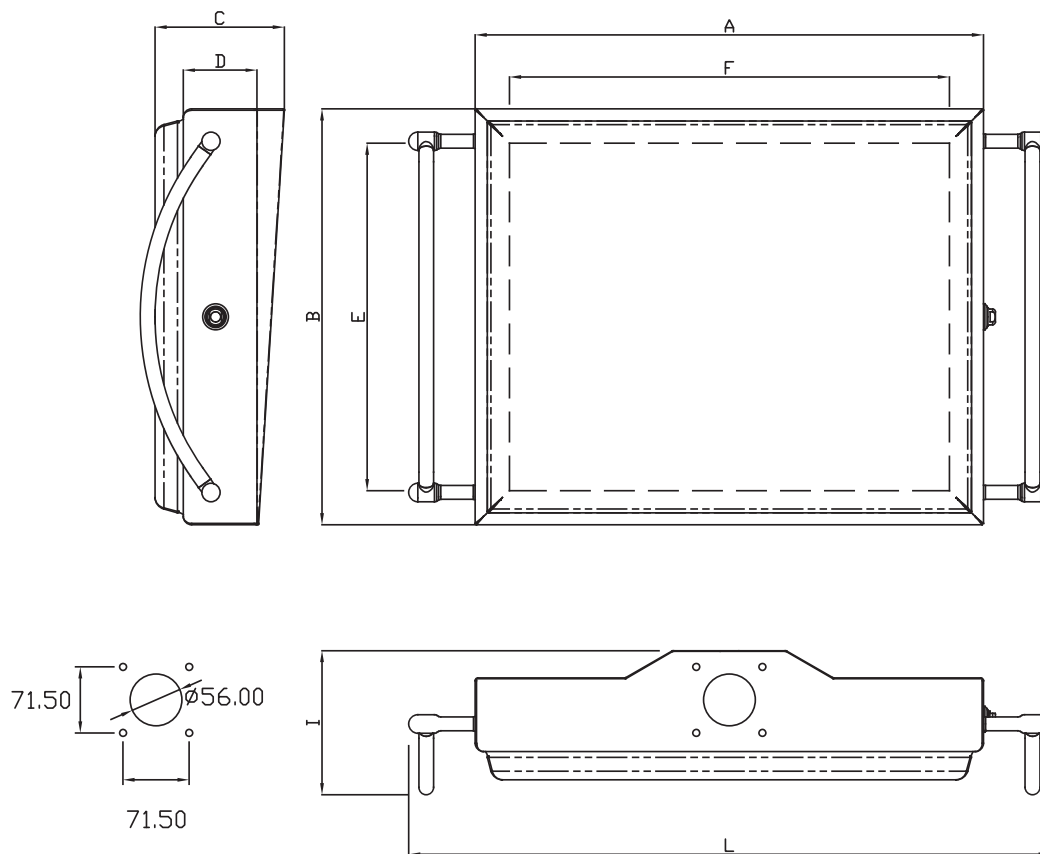
Inner hinges, s/s: 100° opening as per CEI EN 60204-1 recommendations.

Seal removable, cleanable and sterilizable, made of moulded silicone.

Prearranged for earthing according to the regulations in force.

Protection degree IP66.

Doorlock without recesses and/or gaps; outside surfaces made of EN 1.4404 (TYPE 316L) s/s, shaped as per sanitary regulations DIN EN 1672-2 and DIN EN 14159; opening by removable key, zama execution.



IK10

IP66

EN 60 529



TYPE
NEMA 4X, 4, 12, 1

Standard UL508A - UL50
Standard 250



Low voltage directive 2014-35-UE



ITEM	OUTSIDE SIZES			USEFUL SURFACE			OVERALL DIM. WITH HANDLES	
	A	B	C	D	E	F	I	L
BKH32	380	280	140	110	190	240	156	520
BKH43	450	350	140	110	260	300	156	590
BKH54	550	450	140	110	360	400	156	690
BKH65	600	500	140	110	410	450	156	740
BKH75	700	550	140	110	460	550	156	840

UL certification to be requested with the order.



Smooth rounded surfaces, designed for facilitate cleaning without grooves where filth might deposit and remain.



Smooth and finely satin round bended door complete of perimetral single piece silicon gasket.



The gasket, made of blue silicon to point out filth, can be removed and sanitized.

CONTROL BOX HYGIENIC SERIES BKHP

EN 1.4307 (TYPE 304L) s/s execution, finely satin-finished and protected.

Enclosure obtained from a single sheet, thickness 15/10 shaped.

Enclosures drilled for the assembling of articulated arms type TJ-TS-TL with rotary joint code GKS.

Full door, hinged, side lock to take maximum advantage of the drilling space.

Inner plate not provided.

Ergonomic grip handles, TYPE 304 s/s.

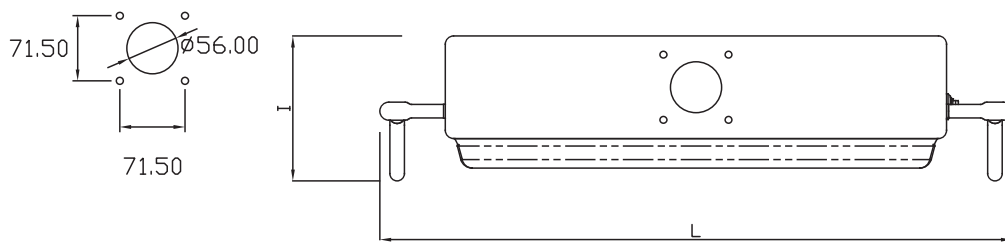
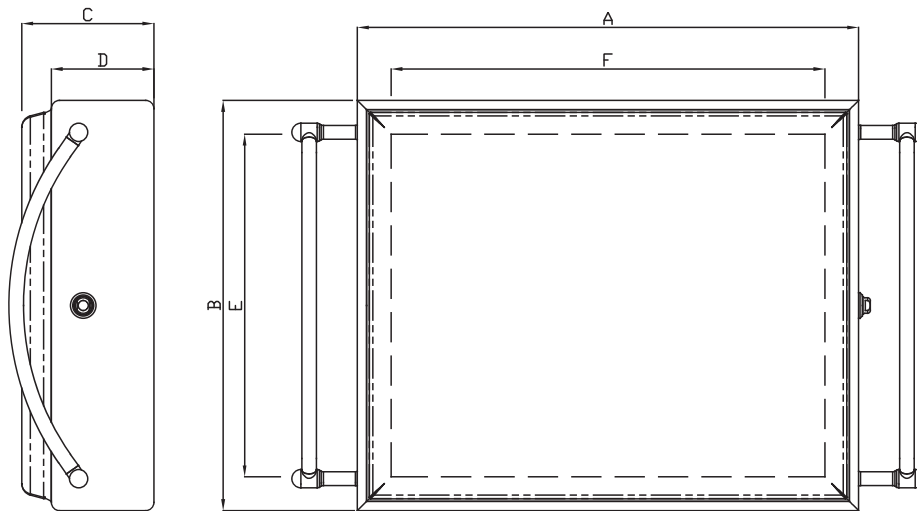
Inner hinges, s/s: 100° opening as per CEI EN 60204-1 recommendations.

Seal removable, cleanable and sterilizable, made of moulded silicone.

Prearranged for earthing according to the regulations in force.

Protection degree IP66.

Doorlock without recesses and/or gaps; outside surfaces made of EN 1.4404 (TYPE 316L) s/s, shaped as per sanitary regulations DIN EN 1672-2 and DIN EN 14159; opening by removable key, zama execution.



IK10

IP66

EN 60 529



TYPE
NEMA 4X, 4, 12, 1

Standard UL508A - UL50
Standard 250

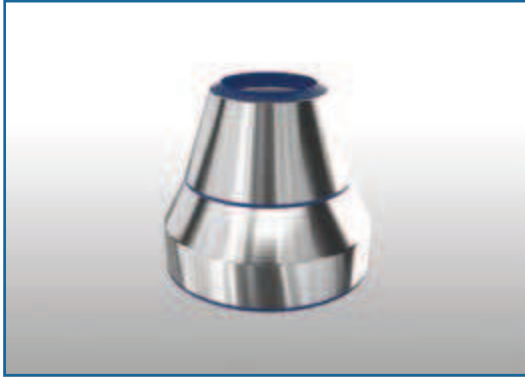


Low voltage directive 2014-35-UE



ITEM	OUTSIDE SIZES			USEFUL SURFACE			OVERALL DIM. WITH HANDLES	
	A	B	C	D	E	F	I	L
BKHP32	380	280	145	113	230	190	159,5	520
BKHP43	450	350	145	113	260	300	159,5	590
BKHP54	550	450	145	113	360	400	159,5	690
BKHP65	600	500	160	128	410	450	174,5	740
BKHP75	700	550	160	128	460	550	174,5	840

UL certification to be requested with the order.

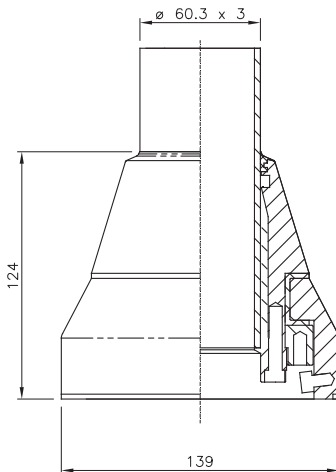


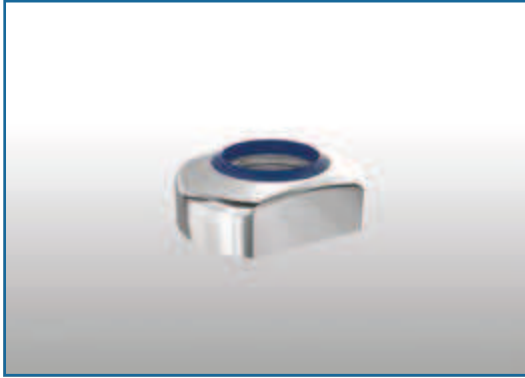
ARTICULATED JOINT GRH

EN 1.4307 (TYPE 304L) s/s execution, complete with blue seal to guarantee tightness.

The special form and the manufacturing criteria guarantee high stiffness and make it suitable for use either at the bottom of the arm or for coupling with big-sized control boxes or bottom-supported ones. The frame on which the joint is to be fastened must be very stiff. Since the joint can be installed without welds, it can be assembled directly by customer after adjusting the arm to its needs. Internal clutch to guarantee easily rotation.

GRH – Universal articulated joint.





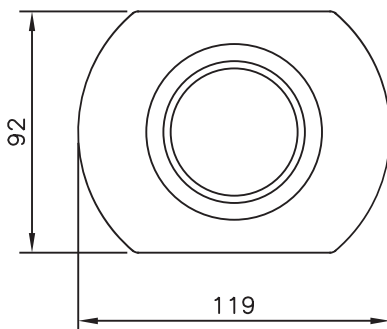
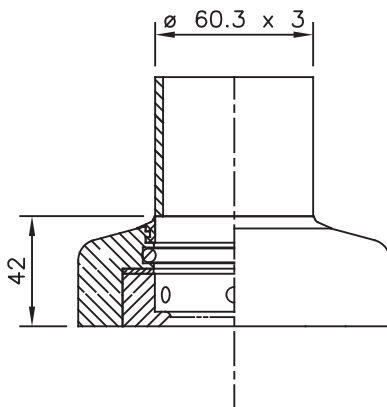
ARTICULATED JOINT GKSH

EN 1.4307 (TYPE 304L) s/s execution, complete with blu gaskets to guarantee tightness, its simple and unitized shape makes it particularly for coupling with hanging control boxes.

The joint does not require any weld, hence it can be installed directly by customer after adjusting the arm to its needs.

Comes complete with a retainer that limits its rotation to 355°. Slightly rounded shape for facilitate drainage.

GKSH – Articulated joint for coupling with control boxes.





REMOVABLE GASKET



The gasket, made of blue silicon to point out filth, can be removed and sanitized.

NO GAPS



Door protection roof, with flush gasket, rounded corners, no gaps.

SLOPING ROOF



Built-in roof, 30° slope, to prevent build-up of filth and facilitate drainage of liquids.

EASY CLEANING



The distance between the sloping roof and the door does not create gaps while facilitating cleaning.

MONOBLOC HYGIENIC CABINETS WITH REMOVABLE SIDE PANELS SERIES CXH

Material: EN 1.4307 (TYPE 304L) s/s, finely satin-finished and protected, thickness: door 20/10, envelope and sides 15/10.

Front door, full or with 3+3 laminate shatterproof glass, stiffening s/s inner frame, drilled to support equipment and/or secure cableways and accessories.*The full door can also be equipped with partial windows and different materials can be used (polycarbonate or aluminium for silk printing) on demand.

Rear side not accessible and ceiling not removable, 30° slope roof to prevent objects being put on it and to facilitate cleaning and liquid drainage.

Side panels, bolted and removable, to be ordered separately.

Doorlock without recesses and/or gaps; outside surfaces made of EN 1.4404 (TYPE 316L) s/s, shaped as per sanitary regulations DIN EN 1672-2 and DIN EN 14159; opening by removable key, zama execution.

The cabinet bottom can be equipped with fairlead plates: enbloc, to be ordered separately.

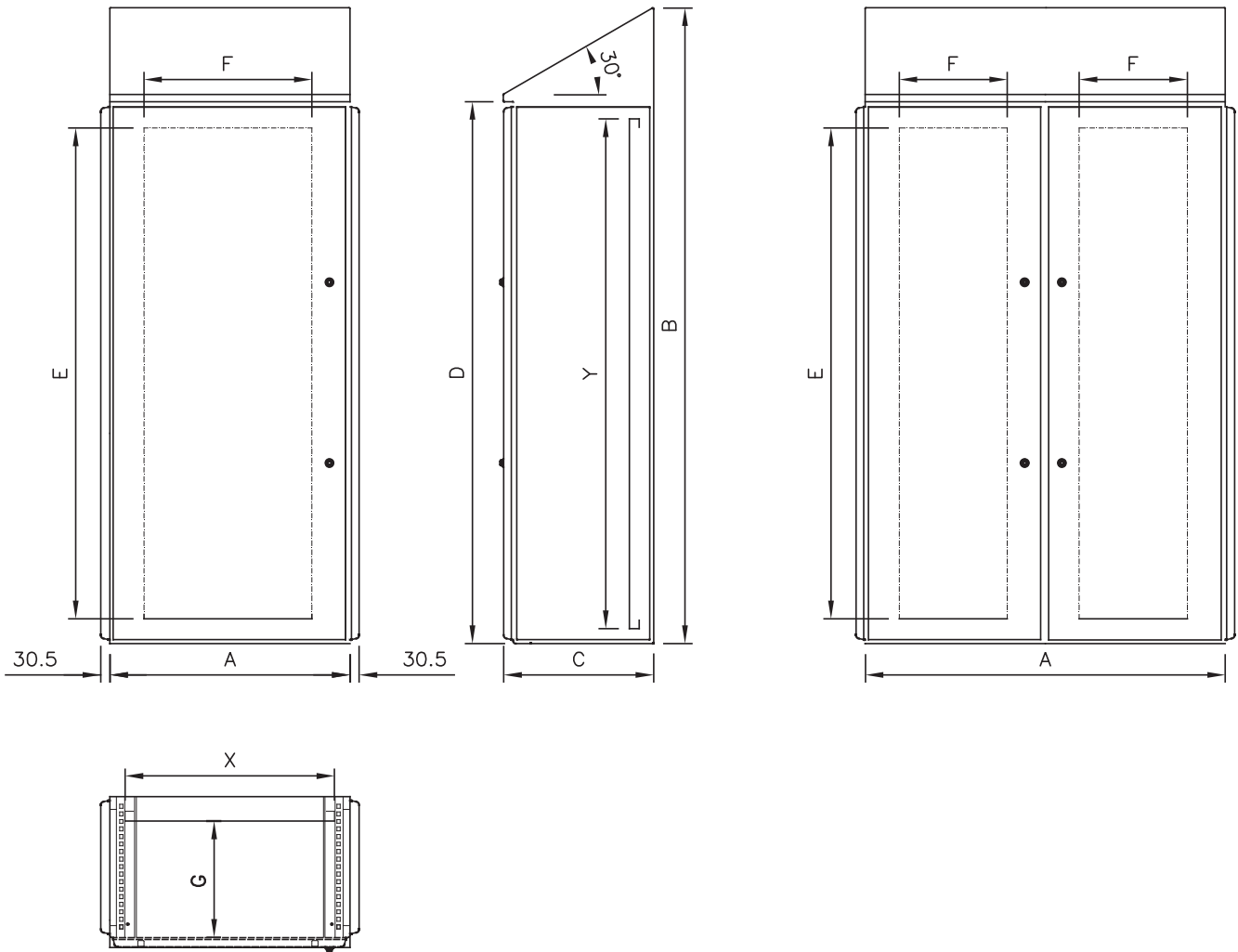
Maximum weight permitted on the door: 30 kg.

Seal removable, cleanable and sterilizable, made of moulded silicone.

Sendzimir inner plate to be ordered separately.

Pre-arranged for earthing as per regulations in force.

Protection degree: IP66.



ITEM	OUTSIDE SIZES				DOOR USEFUL SIZE		USEFUL DEPTH G	INNER PLATE		
	A	B	C	D	E	F		ITEM	X	Y
CXH0485	400	2111	500	1800	1630	160	385	-	-	-
CXH0685	600	2111	500	1800	1630	360	385	PA0517	497	1692
CXH0885	800	2111	500	1800	1630	560	385	PA0717	697	1692
CXH1285	1200	2111	500	1800	1630	360	385	PA1117	1100	1692

UL certification to be requested with the order.



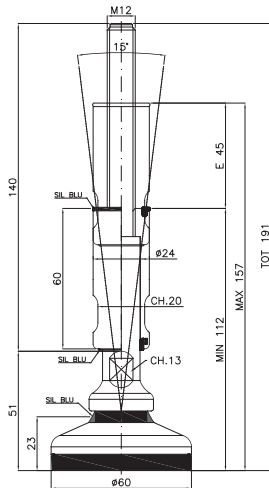
TYPE
NEMA 4X, 4, 12, 1

Standard UL508A - UL50
Standard 250



Low voltage directive 2014-35-UE





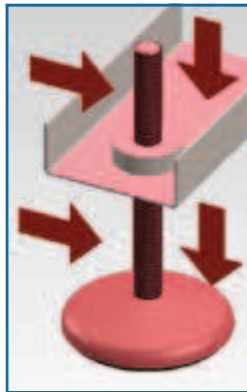
FEET

Adjustable feet, simple and appealing design, certified and approved for use in food, dairy, pharmaceutical industries and in all those environments where compliance with hygienic-sanitary rules are a must. The seals guarantee tightness on all mobile surfaces; the ring nut acting as a lock-nut covers the threaded pin. The ground rest plate adhere perfectly, thus assuring stability with vibration proof effect thanks to the NBR rubber insert.

EN 1.4307 (TYPE 304L) polished s/s execution.

Our feet can make up for floor unevenness up to a 10° angle.

Cod: **PSDXH27120/3A**



SANITARY FOOT

Smooth surfaces, perfectly draining, no threads, sharp corners or gaps where filth could be trapped. Seals on all moving surfaces.

TRADITIONAL FOOT

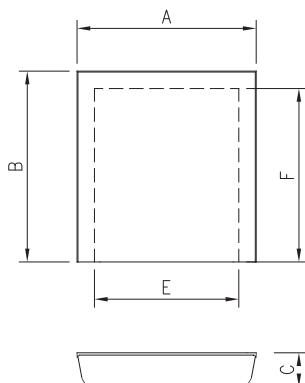
Unprotected threads, undercuts, sharp corners and level, not draining surfaces.

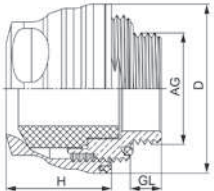
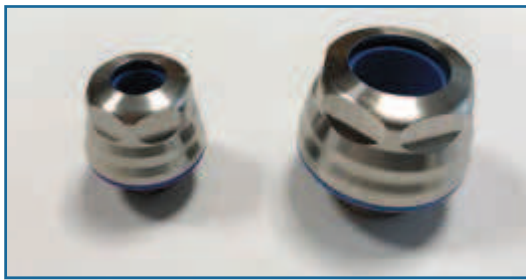


STAINLESS STEEL LABYRINTH CASING HYGIENIC SERIES KLH

Smooth rounded surfaces, they are designed to space the control board from the wall to facilitate clearing and avoid cavities where filth might deposit.

ITEM	A	B	C	D	E
KLH10	170	180	32	136	163
KLH12	215	210	36	182	193
KLH14	320	340	64	276	318
KLH20	390	400	100	333	371





Advice:

- EMC** connection integrated
- VDMA** Riboflavin cleaning test passed
- EHEDG** 01 cleaning test passed
- EHEDG** certificate EL class I AUX approved

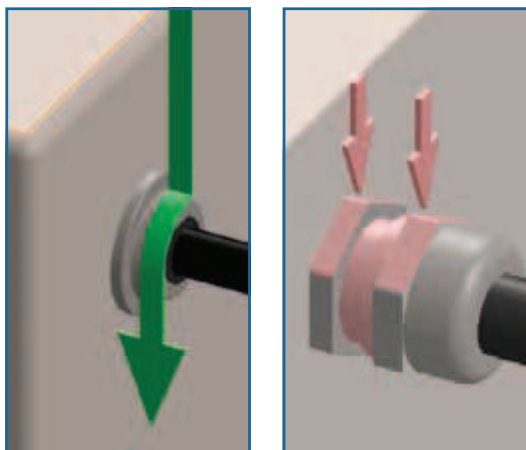
CABLE GLANDS

Metric cable glands Series PH meet the requirements for use in food, dairy, pharmaceutical industries as well as in all those environments where compliance with hygienic-sanitary regulations is a must (Directive on machinery 2006/42/EC DIN EN 1672-2-2005, Documents EHEDG 8 E 13). This is possible thanks to the technical solutions adopted and to the design criteria: 25% sloping surfaces to avoid filth build-up; radial corners; no threads; gaps in contact with the outside; tamperproof for they cannot be opened from the outside. Delivered complete with OR, standard seal on the cable and ring nut.

EN 1.4307 (TYPE 304L) s/s execution, mirror finish; the EPDM seal is fit for use in the environments for which the cable gland has been designed: gaskets made from different materials can be supplied on request.

Protection degree IP68 as per EN 60 529 and IP69K as per DIN 40 050-T9.
Temperature range: -40°C + 180°C, intermittent up to 40°C approx.

IDEAL FOR HIGH-PRESSURE CLEANING



SANITARY CABLE GLAND

Smooth slanting surfaces, no threads in contact with the environment, radial corners.

TRADITIONAL CABLE GLAND

Unprotected threads, sharp corners and level surfaces not draining.

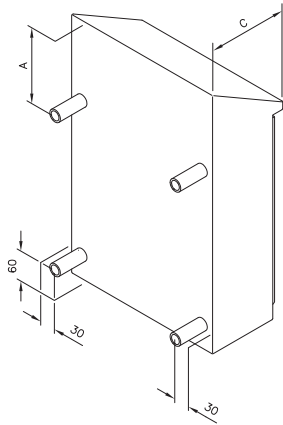


CABLE GLANDS

ITEM	CLAMPING RANGE (MM)	AG	GL (MM)	D (MM)	SW (MM)	H (MM)
PH12050	5 – 6,5	M 12 x 1,5	6	21	14	19
PH16060	6 – 7,5	M 16 x 1,5	6	27	19 – 21	20
PH16075	7,5 – 10	M 16 x 1,5	6	27	19 – 21	20
PH20090	9 – 12	M 20 x 1,5	6	33	24 – 27	22,5
PH20110	11 – 13,5	M 20 x 1,5	6	33	24 – 27	22,5
PH25140	14 – 16	M 25 x 1,5	7	38	30	23,5
PH25150	15 – 18	M 25 x 1,5	7	38	30	23,5
PH32180	18 – 21	M 32 x 1,5	8	45	36	26,5
PH32210	21 – 25	M 32 x 1,5	8	45	36	26,5

PLUGS

ITEM	ø	FOR DRILLS		FOR CABLE GLANDS
TP0716	20	6,5	÷ 16	M12 – M16
TP1624	28	16,5	÷ 24	M20
TP2431	35	24,5	÷ 31	M25
TP3140	45	31,5	÷ 40	M32 – M 40



WALL MOUNTS

The wall mounts of the sanitary line have been designed to space the control board from the wall and prevent filth from building-up between the two elements, and to allow cleaning.

Cylindrical shape with no threads or gaps in contact with the environment; the threaded parts are protected by OR.

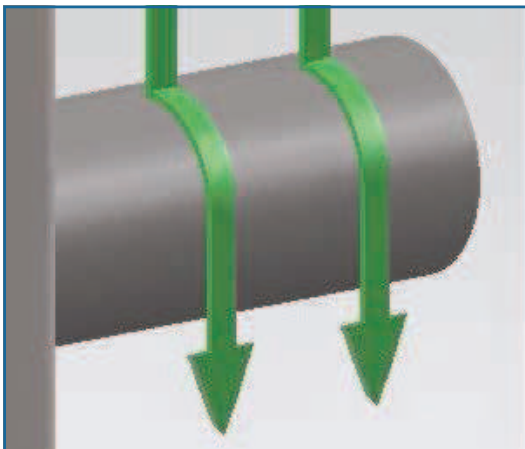
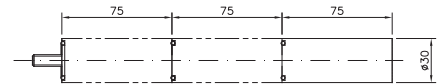
EN 1.4307 (TYPE 304L) s/s execution, satin finish, available with 75mm standard length, can be coupled to space the control board from the wall 75mm, 150mm and 225mm.

To avoid criticalities from an hygienic-sanitary point of view, the small cabinets of the QSH and QLSE line have no drilling; some blind holes are however present in the back wall, to identify the exact positions of the wall mount drills.

DIST75QSD 4-pcs pack of wall mounts.

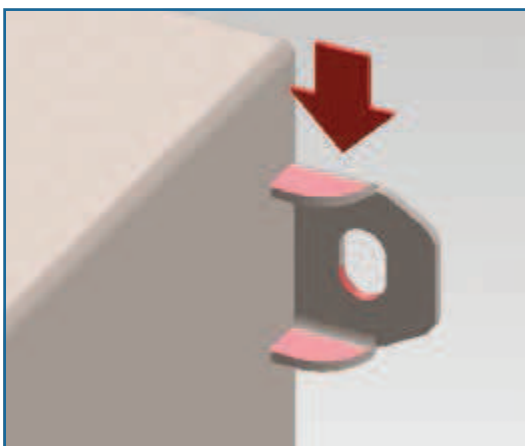


C	A
DEPHT	
180	187
200	198
250	227
300	256
320	267



SANITARY WALL MOUNT SYSTEM

Smooth rounded surfaces, they are designed to space the control board from the wall to facilitate clearing and avoid cavities where filth might deposit.



TRADITIONAL WALL MOUNT SYSTEM

Designed to secure the control board close to a wall, filth can build up between the two elements. Level surfaces and undercuts.



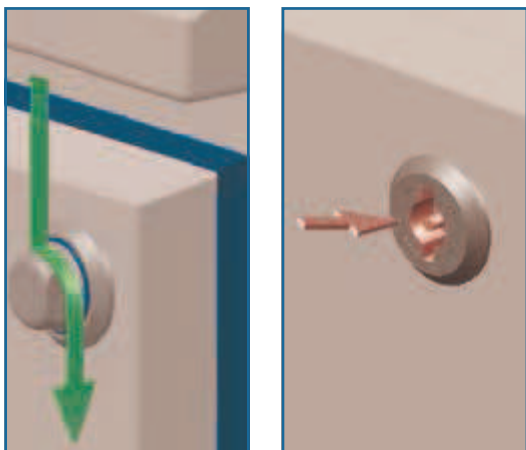
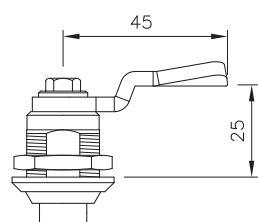
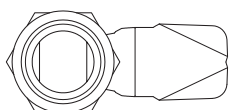
DOORLOCK

The Sanitary SG838 doorlocks are manufactured to comply with hygienic-sanitary regulations DIN EN 1672-2 and DIN EN 14159. No gap where filth might deposit in the part in contact with the environment; complete with seal to prevent cracking between the rotating bushing and the fixed body. Opening and closing, on . turn, require an appropriate key or other suitable tool.

The body of the doorlock is made of EN 1.4571 (TYPE 316TI) s/s, while the tongue inside the cabinet is made of galvanized steel (EN 1.4307 - Type 304L) s/s on request.

Protection degree IP69K as per DIN 40 050-T9.

Standard on the cabinets of the QSD line, they are optional on the cabinets of the QLSE line.



SLOPING FLANGE AGKH

For use joint with the GK joints when the control box needs 10° tilting to make it ergonomic.

Execution, it comes complete with seal and fastening screws.

AGKH – adaptation flange for 10° box tilting.

