



innovative  
enclosure solutions  
for industrial & electronic  
applications

e RAM  
STAINLESS STEEL

The natural combination  
for your application



## e ram

# THE NATURAL COMBINATION FOR YOUR APPLICATION

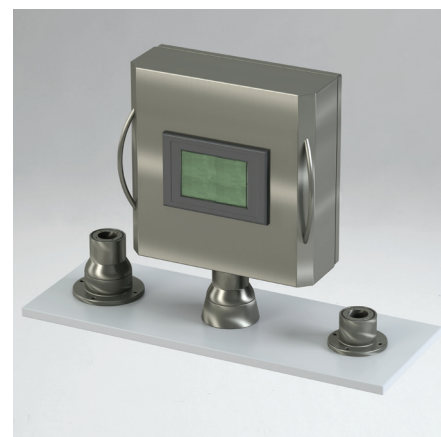
**E RAM** *ramus (ramus, rami) -  
branch, ramification.*

Like the branches of a tree, in all their countless forms, our E RAM suspension systems, in their various types and configurations, remain firmly connected to your plant.

**E RAM** A new series of beautifully designed operator panel housings and modular suspension systems for industrial applications made entirely from stainless steel.

The support arms and operator housings are available in standard or custom sizes based on the user's requirements, and are designed to offer the absolute best in terms of protection, performance and reliability - even under harsh conditions.





## TOGETHER, WE CAN CREATE THE IDEAL SYSTEM FOR YOU IN JUST A FEW SIMPLE STEPS

**industrial**

**food  
sector**

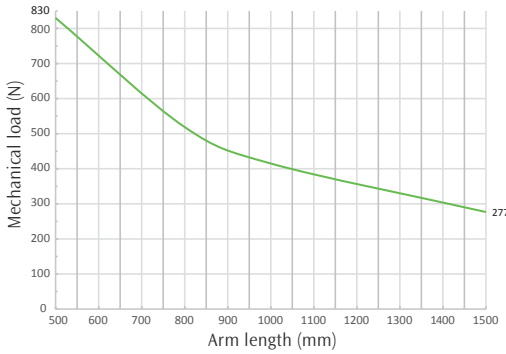
**maximum  
hygiene**

1. Based on the touch panel and the HMI interface, select the size of the operator housing (standard or custom) and the material (AISI304L or 316L), also evaluating the potential need for handles, a keyboard support or custom drilling (either on the panel or the back of the operator housing).
2. Select the suspension system's configuration, evaluating the four available options for the support section and the wide range of wall-mounting and operator housing couplings.
3. If the standard options do not meet your installation requirements, ETA will be happy to help you come up with the best possible solution for your application.

# FLEXIBILITY

## THE E RAM ARTICULATED SUPPORT ARM

### Load capacity



### Production

Articulated single-piece support profiles, made from AISI304L stainless steel section with a thickness of 4.00 mm and a satin finish. External diameter 48.30 mm.

### Composition

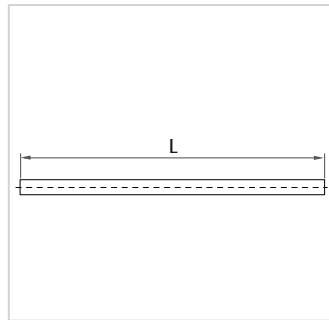
- I, L, J, or S sections (upon request).
- Screws for fastening to the coupling elements supplied together with the relative couplings.

### Protection rating

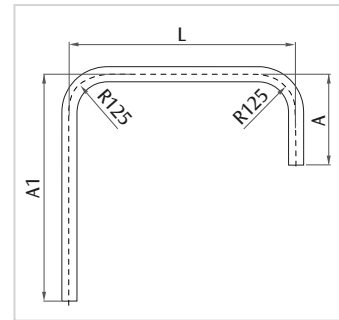
- IP66 / IP69K, compliant with IEC EN62208 and EN60529.

**AVAILABLE  
IN STANDARD  
OR CUSTOM  
SIZES**

### “I” VERSION “J” VERSION



CODE	DIMENSIONS	
	L	
ERI-0500X	500	
ERI-0750X	750	
ERI-1000X	1000	

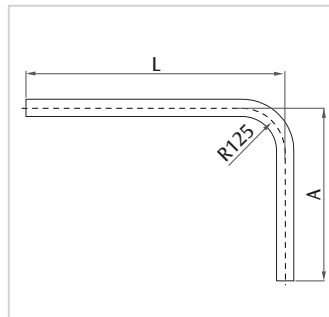


CODE	DIMENSIONS		
	A <sup>1</sup>	L	A
ERJ-030503X	300	500	300
ERJ-050503X	500	500	300
ERJ-070703X	750	750	300

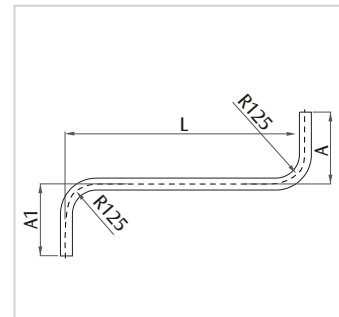
Your solution: ERI-L  
Min. L = 250 mm  
Max. L = 1500 mm

Your solution: ERJ-A<sup>1</sup>LA  
Min. A<sup>1</sup> = 250 mm  
Max. A<sup>1</sup> = 1000 mm  
Min. L = 250 mm  
Max. L = 1000 mm  
Min. A = 250 mm  
Max. A = 1000 mm

### “L” VERSION “S” VERSION



CODE	DIMENSIONS	
	L	A
ERL-0305X	300	500
ERL-0505X	500	500
ERL-0705X	750	500



Available upon request

Your solution: ERL-LA  
Min. L = 250 mm  
Max. L = 1000 mm  
Min. A = 250 mm  
Max. A = 1000 mm

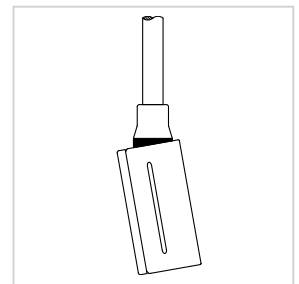
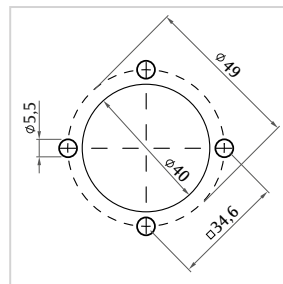
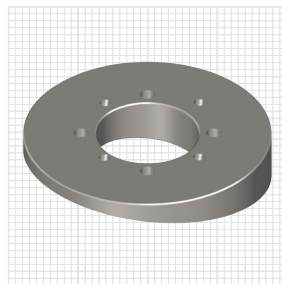
Your solution: ERS-A<sup>1</sup>LA  
Min. A<sup>1</sup> = 250 mm  
Max. A<sup>1</sup> = 1000 mm  
Min. L = 250 mm  
Max. L = 1000 mm  
Min. A = 250 mm  
Max. A = 1000 mm

# COMBINATION

A wide range of fixed/swivel joints, base attachments and mounting brackets made from AISI303 or AISI304L stainless steel, all of which can be easily assembled by the end user. The interchangeability of the components allows for the complete customization of both the combinations and their final applications.

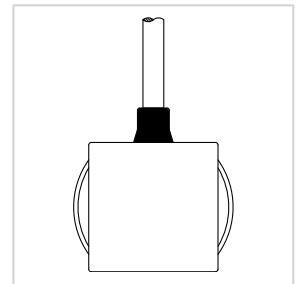
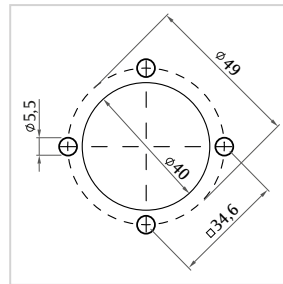
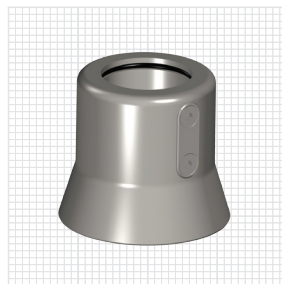
## FIXED 10° ANGLE FOR HOUSING ERCF-010X

Made from AISI303 stainless steel.  
Complete with fastening screws.



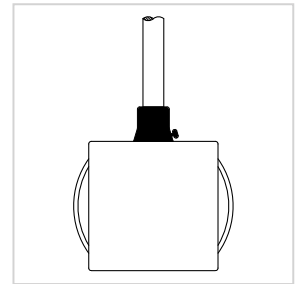
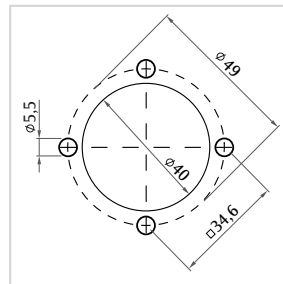
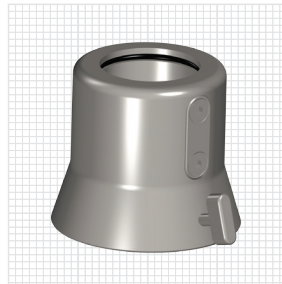
## FIXED ATTACHMENT FOR HOUSING ERCF-001X

Made from AISI303 stainless steel.  
Complete with fastening screws.



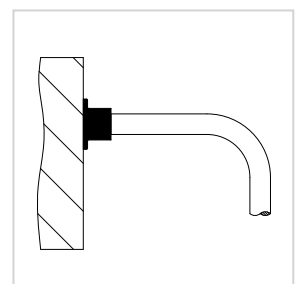
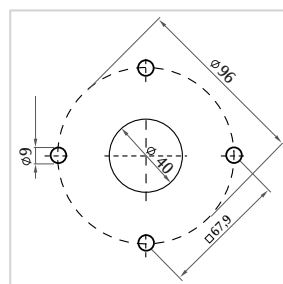
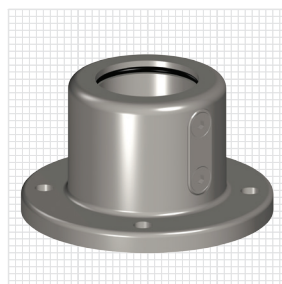
## SWIVEL ATTACHMENT FOR HOUSING ERCG-001X

Made from AISI303 stainless steel.  
Complete with fastening screws and swivel locking system.



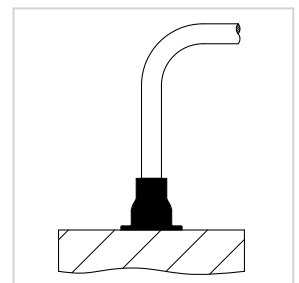
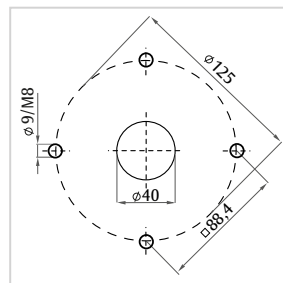
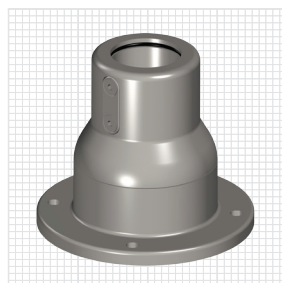
## FIXED WALL-MOUNTING BASE ATTACHMENT ERPF-001X

Made from AISI303 stainless steel.  
Complete with fastening screws.



## SWIVEL WALL-MOUNTING BASE ATTACHMENT ERPG-001XA

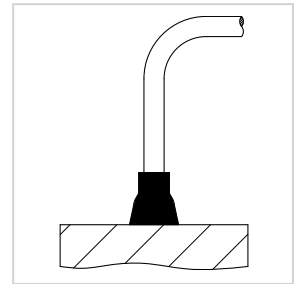
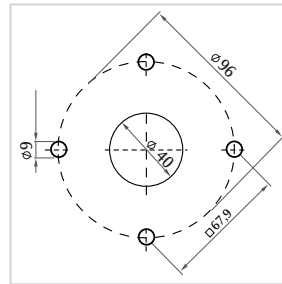
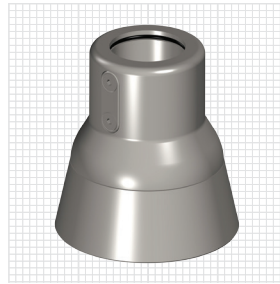
Made from AISI303 stainless steel.  
Complete with fastening screws and swivel locking system. Front fastening.



**SWIVEL WALL-MOUNTING BASE ATTACHMENT**

**ERPG-001XP**

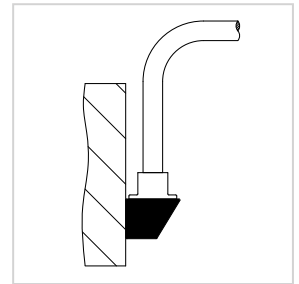
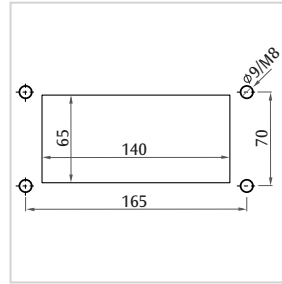
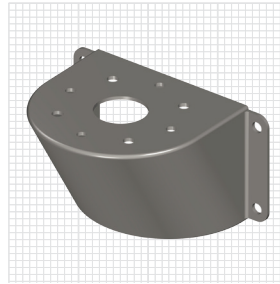
Made from AIS303 stainless steel.  
Complete with fastening screws and swivel locking system. Rear fastening.



**WALL-MOUNTING BRACKET**

**ERPS-001XA**

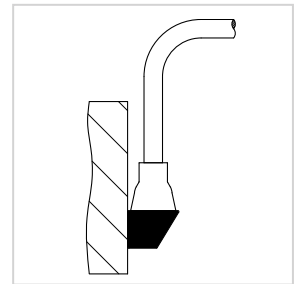
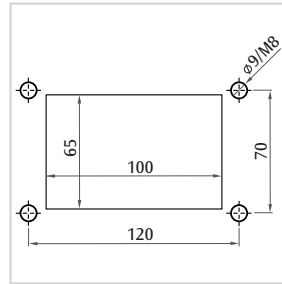
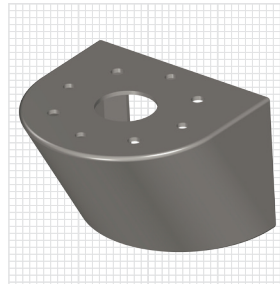
Made from AIS304L stainless steel.  
Allows for the wall-mounting of the base attachments. Front fastening.  
To be combined with: ERPF-001X or ERPG-001XP.



**WALL-MOUNTING BRACKET**

**ERPS-001XP**

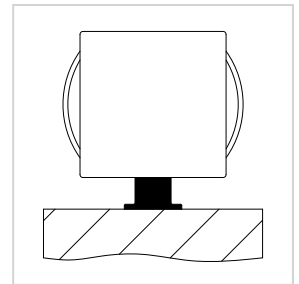
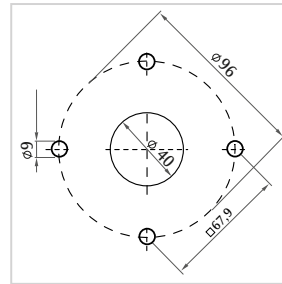
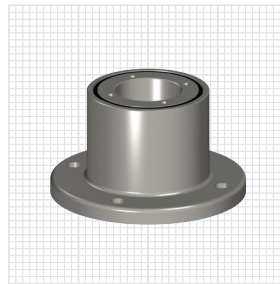
Made from AIS304L stainless steel.  
Allows for the wall-mounting of the base attachments. Rear fastening.  
To be combined with: ERPF-001X or ERPG-001XP.



\* **FIXED DIRECT BASE ATTACHMENT**

**ERDF-001X**

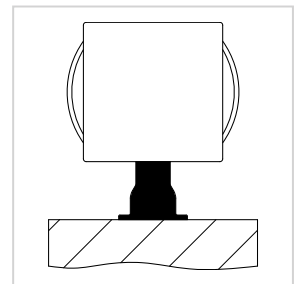
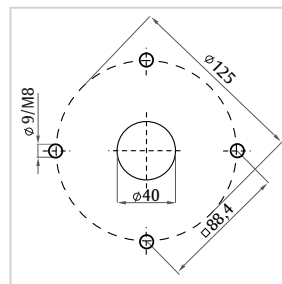
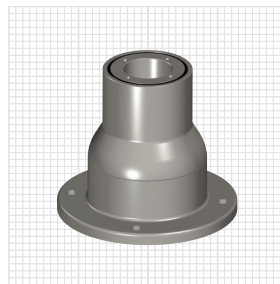
Made from AIS303 stainless steel.  
Complete with fastening screws.



\* **SWIVEL DIRECT BASE ATTACHMENT**

**ERDG-001XA**

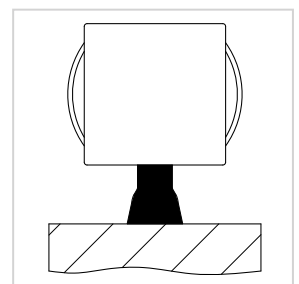
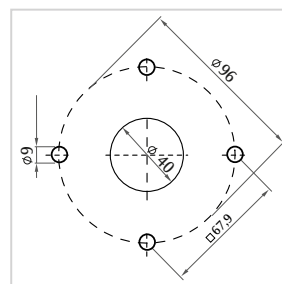
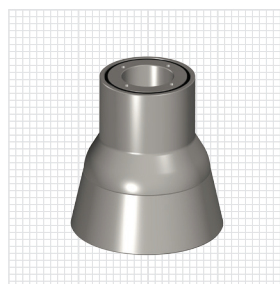
Made from AIS303 stainless steel.  
Complete with fastening screws and swivel locking system. Front fastening.



\* **SWIVEL DIRECT BASE ATTACHMENT**

**ERDG-001XP**

Made from AIS303 stainless steel.  
Complete with fastening screws and swivel locking system. Rear fastening.



\* **Note:** for the container drilling template, please refer to the ERCF-001X

# SAFETY

## E RAM OPERATOR PANEL ENCLOSURE

### Production

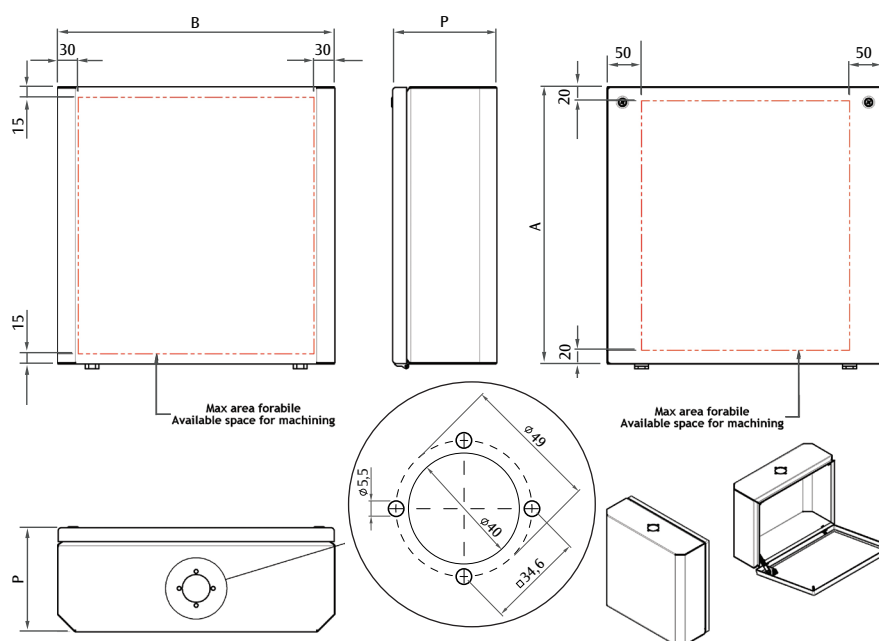
Operator housing made from AISI304L satin stainless steel sheet metal with a thickness of 1.5 mm and a ScotchBrite finish, shaped and welded on all sides. Furnished with a solid hinged lid, complete with a panel-stopper, screwed on at the top for easy maintenance. Rounded stainless steel handles, which can be positioned either on the sides, the bottom or the curved sections of the operator housing.

### Composition

- Solid operator housing complete with lid and panel-stopper.
- Keyboard support supplied separately.
- Handles supplied separately.

### Protection rating

- IP66 / IP69K, compliant with IEC EN62208 and EN60529.
- NEMA 4X, compliant with UL508A and UL50.
- Protection rating ensured by the use of two-component silicone foam.
- Impact resistance rating IK10, compliant with IEC EN62208 and EN62202.



CODE E RAM	OPERATOR HOUSING DIMENSIONS		
	B	A	P
ERAM3-315X	300	300	150
ERAM4-315X	400	300	150
ERAM4-415X	400	400	150
ERAM6-415X	600	400	150

- To order the keyboard support, use the part of the housing code that indicates the width and add PTX to the end of the code (i.e. ERAM3-PTX = keyboard support for a 300mm wide E RAM housing).
- To order the version in AISI316L, add H to the end of the code (i.e. ERAM3-315XH).

### Optionals

Handle made from AISI304L stainless steel.

Package containing 2 pieces, complete with mounting accessories ERM-02 – L=200.

AVAILABLE  
IN STANDARD  
OR CUSTOM  
SIZES

CUSTOM  
DRILLING FOR THE  
OPERATOR'S  
PANEL

TOUCH PANEL  
MOUNTING ON THE  
BACK OF THE  
HOUSING OR ON THE  
PANEL

AISI316L VERSION  
UPON REQUEST



innovative  
enclosure solutions  
for industrial & electronic  
applications

E.T.A. S.P.A.  
Via Monte Barzaghino, 6  
I-22035 Canzo, Como (Italy)  
t. +39 031 673611 f. +39 031 670525  
infosede@eta.it www.eta.it

E.T.A. ENCLOSURES (UK) LIMITED  
Unit 2, Ignite, Magna Way  
Rotherham, South Yorkshire, S60 1FD  
t. +44 01709 386630 f. +44 01709 369524  
info@eta-enclosures.co.uk  
www.eta-enclosures.co.uk

SASU E.T.A. France  
Rue du Pré aux Boeufs  
76806 St Etienne du Rouvray  
t. +33 02 35643470 f. +33 02 35642275  
eta-france@wanadoo.fr  
www.eta-france.fr

E.T.A. S.P.A.  
Gagarinskaya st., 12  
191187, Saint-Peterburg (Russia)  
www.eta.it

© E.T.A. S.P.A. January 2015