

Stock program 26.3

f-tronic®

installing innovation

f-tronic – installing innovation

We find electrical installation easy.

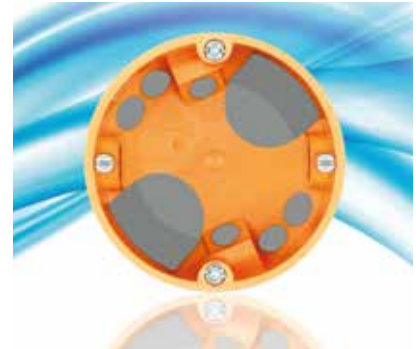
Why do we say that? Because we make it easy. While never losing sight of efficiency. As a mass producer, with more than 100.000 plastic injection parts per day, we know what a huge challenge we face. That's what makes it so attractive.

In product development, we always strive to exceed expectations. Especially our own. Because only when we exceed expectations, are we 100 % sure that we have created something special, without compromises. And over 1.000 parts prove: We never get enough of it.

We have learnt a lot in the 25 years since our company was founded. And that's why we can do so much. Think: "Full-range supplier". That's why we are well-known in so many European countries – both in electrical wholesale and with installers. And we feel it is our duty to think of great innovations for tomorrow, today.

We just call it differently. We call it: f-tronic.

Quality – Made in Germany



See separate distribution boards brochure



f-tronic Stock Program Content

Field distributors	5
Field distributors	5
Distribution boards.....	6
Small distributors	7
Small distributors JUMBO	9
Small distributors JUMBO, accessories	13
Communication distributors JUMBO K.....	15
Wall-mounted small distributors VISION	17
Wall-mounted small distributors VISION, accessories	19
Wall-mounted automatic boxes	21
Wall-mounted communication distributor VISION K.....	23
Damp area small distributors.....	25
Damp area small distributors, accessories	29
Terminal technology.....	31
Socket boxes	37
Flush-mounted installation, windproof.....	39
Flush-mounted installation.....	40
Flush-mounted installation solid	42
Flush mounted installation accessories.....	43
Cavity wall installation, windproof.....	47
Cavity wall installation	49
Fire Protection Socket Boxes	51
Solid cavity wall installation	52
Cavity wall installation accessories	53
Built-in light housing	57
Damp area installation.....	59
Trunking boxes / surface-mounted installation.....	61
Concrete installation	63
Multi function box.....	83
Fire Protection Systems	87
Fire Protection Socket Boxes	90
Fire Protection Foam	91
Fire Protection Block	95
Fire Protection Plugs	97
Fire Protection Collars	99
Intumescent Sealant	101
Fire Protection accessories	102
Equipment carrier for ETICS / TIE.....	103
TIE-Systeme.....	103
TIE-systems accessories.....	112
Grounding material.....	113
Cable Management System	115
Industrial enclosures.....	119
PVC Industrial enclosures	121
PVC industrial enclosures accessories	123

Field distributors

For intelligent installation technology for commercial and public buildings, but also for residential housing. Especially when it comes to large-scale projects and time and costs are of the essence, our FV field distributors and VS distribution boards will make you a winner.

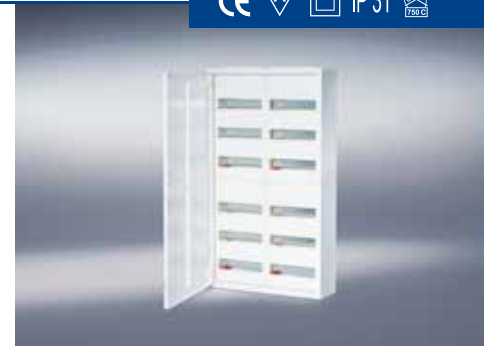
Advantages at a glance

- Attractively designed housing made from 1 mm thick, powder-coated sheet steel
- Unique, slide-out mounting system, for quick and flexible wall mounting
- Door can be removed without tools and optionally attached on left or right
- Large door opening angle
- Cover strips and N/PE plug terminals included in delivery
- Hat rails can be lowered
- Large wiring area behind the hat rails



Field distributors

- Cabinet depth 165 mm
- Large cable inlets at the bottom, top and backside on each panel width
- Top and bottom cable inlet with press-out membrane, for quicker and easier handling without additional tools
- All covers made with lateral partitions
- From three panel widths, with double door
- Different lock versions possible – also DIN cylinder lock
- Including 1 x ZSSKN34 and 1 x ZSSKPE34 plug terminal per field
- Material: sheet steel, high-quality powder coated



Item No.	Type	Design	H x W x D (mm)	Colour	SU	CB	PL
7110220	FV2-3	2 field, 3-row, 72 modules	500 x 550 x 165	white	1	1	24
7110221	FV3-3	3 field, 3-row, 108 modules	500 x 800 x 165	white	1	1	15
7110222	FV1-4	1 field, 4-row, 48 modules	650 x 300 x 165	white	1	1	40
7110223	FV2-4	2 field, 4-row, 96 modules	650 x 550 x 165	white	1	1	24
7110224	FV3-4	3 field, 4-row, 144 modules	650 x 800 x 165	white	1	1	15
7110225	FV1-5	1 field, 5-row, 60 modules	800 x 300 x 165	white	1	1	20
7110226	FV2-5	2 field, 5-row, 120 modules	800 x 550 x 165	white	1	1	16
7110227	FV3-5	3 field, 5-row, 180 modules	800 x 800 x 165	white	1	1	10
7110228	FV4-5	4 field, 5-row, 240 modules	800 x 1050 x 165	white	1	1	6
7110229	FV1-6	1 field, 6-row, 72 modules	950 x 300 x 165	white	1	1	18
7110230	FV2-6	2 field, 6-row, 144 modules	950 x 550 x 165	white	1	1	10
7110231	FV3-6	3 field, 6-row, 216 modules	950 x 800 x 165	white	1	1	8
7110232	FV4-6	4 field, 6-row, 288 modules	950 x 1050 x 165	white	1	1	6

Distribution boards

- Design as field distributors
- Cabinet depth including fixing lugs 210 mm
- Including 1 x ZSSKN34 and 1 x ZSSKPE34 plug terminal per field
- Material: sheet steel, high-quality powder coated



Item-No	Type	Design	H x W x D (mm)	Colour	SU	CB	PL
7110240	VS1-6	1 field, 6-row, 72 modules	950 x 300 x 210	white	1	1	15
7110241	VS2-6	2 field, 6-row, 144 modules	950 x 550 x 210	white	1	1	8
7110242	VS3-6	3 field, 6-row, 216 modules	950 x 800 x 210	white	1	1	7
7110243	VS4-6	4 field, 6-row, 288 modules	950 x 1050 x 210	white	1	1	3
7110244	VS5-6	5 field, 6-row, 360 modules	950 x 1300 x 210	white	1	1	3
7110245	VS1-7	1 field, 7-row, 84 modules	1100 x 300 x 210	white	1	1	15
7110246	VS2-7	2 field, 7-row, 168 modules	1100 x 550 x 210	white	1	1	8
7110247	VS3-7	3 field, 7-row, 252 modules	1100 x 800 x 210	white	1	1	5
7110248	VS4-7	4 field, 7-row, 336 modules	1100 x 1050 x 210	white	1	1	3
7110249	VS5-7	5 field, 7-row, 420 modules	1100 x 1300 x 210	white	1	1	3
7110250	VS1-8	1 field, 8-row, 96 modules	1250 x 300 x 210	white	1	1	8
7110251	VS2-8	2 field, 8-row, 192 modules	1250 x 550 x 210	white	1	1	6
7110252	VS3-8	3 field, 8-row, 288 modules	1250 x 800 x 210	white	1	1	5
7110253	VS4-8	4 field, 8-row, 384 modules	1250 x 1050 x 210	white	1	1	3
7110254	VS5-8	5 field, 8-row, 480 modules	1250 x 1300 x 210	white	1	1	3
7110255	VS1-9	1 field, 9-row, 108 modules	1400 x 300 x 210	white	1	1	8
7110256	VS2-9	2 field, 9-row, 216 modules	1400 x 550 x 210	white	1	1	6
7110257	VS3-9	3 field, 9-row, 324 modules	1400 x 800 x 210	white	1	1	5
7110258	VS4-9	4 field, 9-row, 432 modules	1400 x 1050 x 210	white	1	1	3
7110259	VS5-9	5 field, 9-row, 540 modules	1400 x 1300 x 210	white	1	1	3

True space marvels!



Small distributors

The right distributor for any application

Their variety can hardly be beaten. Whether flush-mounted, cavity wall, wall-mounted, communication or damp area distributors – f-tronic has them all! Our small distributor range has the right product for any application.

The JUMBO and VISION series allows for the combination of circuit distribution and communication application in the same design.

For installation in damp areas we offer robust and resistant distributors up to protection class IP 65 and a size of up to 70 DU.

A high level of quality is self-evident, like for example the separate neutral terminal assembly for fulfilling the requirement of the DIN VDE 0100-410 for the additional FI protection.

Small distributors 7

Small distributors JUMBO	9
Small distributors JUMBO, accessories	13
Communication distributors JUMBO K.....	15
Wall-mounted small distributors VISION.....	17
Wall-mounted small distributors VISION, accessories	19
Wall-mounted automatic boxes	21
Wall-mounted communication distributors VISION K	23
Damp area small distributors.....	25
Damp area small distributors, accessories	29
Terminal technology.....	31



Wall-mounted, cavity and flush-mounted wall distributors – each series including communication distributor



Damp area small distributors

The small distributor JUMBO

The name says it all: JUMBO is the small distributor with extra-large capacity that offers two advantages: On the one hand, it absorbs more thermal loss and thus allows genuine 12 + 2 modules in up to four rows. On the other hand the large connection spaces offer plenty room for an even more convenient installation.

Advantages at a glance

- Extra 50 % wiring space compared to conventional small distributors: 165 mm connection space on top, 145 mm connection space at bottom, plus wiring space at the sides
- Optimum heat removal thanks to integrated ventilation slots
- Strain relief feature at top and bottom
- Integrated levels for lining up the wall box
- Snap closing at two points for safety housing
- Modern and comfortable terminal technology

12+2 24+4 36+6 48+8



Width mm Outer dimensions including frame	365	365	365	365
Width mm Niche dimensions for wall box	359	359	359	359
Width mm Cut out dimension for cavity wall installation	323	323	323	323
Height mm Outer dimensions including frame	400	525	650	775
Height mm Niche dimensions for wall box	393	518	643	768
Height mm Cut out dimension for cavity wall installation	360	485	610	735

Strong arguments for a strong distributor



Triple socket:

The hardware components are easily and clearly mounted on a perforated plate in the JUMBO communication distributor. The distributors are equipped with a triple socket with increased contact protection for the supply of the components with line voltage. The plug power adapter can be optionally inserted horizontally or vertically.



Unique!

The integrated ventilation openings ensure circulation and removal of the thermal loss. Connection space of 165 mm on the top and 145 mm at the bottom as well as connection spaces at the sides provide plenty room for a convenient installation.



As the integrated levels are visible from the front and from the back, the wall box can be used as an installation template. The 1 and 2-row distributors JUMBO of the flush mounted small distributor series are equipped with a shared PE/N-terminal and an extra FI Terminal. The 3-row and 4-row distributors are equipped with an integrated PE and N clamp and an additional shared N/N clamp. Due to the three N potentials (smallest N potential 14 slots, 1.5 to 4 mm² and three screw clamps, 2.5 to 25 mm²), assembling the electric circuit distributor is easy to do, without requiring wiring, with the group RCD or with the RCBO switches. The terminals are arranged in the wiring spaces in a space saving way and thus ensure optimal use. The JUMBO is optionally available completely with screw clamping technology.



Cavity wall anchor set

Combination small distributor JUMBO with plug terminal for FM (flush-mounted) and CW (cavity wall)

- Can be flush-mounted or installed in a cavity wall
- PE/N plug terminals depending on design
- Additional RCD clamps included
- Generous wiring space
- Strain relief feature
- 12+2 modules per row
- For devices up to 63 A
- Including metal frame and door
- Material: PS, recyclable / door and frame - sheet steel, high quality powder-coated

Item No.	Type	Design	H x W x D (mm)	Colour	SU	CB	PL
7250012	JUMBO12+2	1-row, 12+2 modules, with metal frame and door	400 x 365 x 98	white	1	1	90
7250017	JUMBO24+4	2-row, 24+4 modules, with metal frame and door	525 x 365 x 98	white	1	1	60
7250022	JUMBO36+6	3-row, 36+6 modules, with metal frame and door	650 x 365 x 98	white	1	1	45
7250028	JUMBO48+8	4-row, 48+8 modules, with metal frame and door	775 x 365 x 98	white	1	1	45
7290079	HWA-SET *	Cavity wall anchor set for JUMBO distributor			1	10	2.880
7290098	MH-SET *	Mounting bracket set for FM (flush-mounted) installation			1	30	2.160

* JUMBO accessories sold separately - from p.13



Combination small distributor JUMBO with screw clamp and equipment rack for FM (flush-mounted) and CW (cavity wall)

- Can be flush-mounted or installed in a cavity wall
- PE/N screw terminals depending on design
- Additional RCD clamps included
- Generous wiring space
- Strain relief feature
- 12+2 modules per row
- For devices up to 63 A
- Including metal frame and door
- Material: PS, recyclable / door and frame - sheet steel, high quality powder-coated

Item No.	Type	Design	H x W x D (mm)	Colour	SU	CB	PL
7250015	JUMBO 12+2-XX	Combi-distributor, 1-row, 12+2 modules*	400 x 365 x 98	white	1	1	90
7250020	JUMBO 24+4-XX	Combi-distributor, 2-row, 24+4 modules, including equipment rack*	525 x 365 x 98	white	1	1	60
7250025	JUMBO 36+6-XX	Combi-distributor, 3-row, 36+6 modules, including equipment rack*	650 x 365 x 98	white	1	1	45
7250031	JUMBO 48+8-XX	Combi-distributor, 4-row, 48+8 modules, including equipment rack*	775 x 365 x 98	white	1	1	45
7290079	HWA-SET	Cavity wall anchor set for JUMBO distributors			1	10	2.880
7290098	MH-SET	Mounting bracket set for FM (flush-mounted) installation			1	30	2.160

* With metal frame and door



Flush-mounted wall small distributor JUMBO with screw clamp

- For installation in flush-mounted walls
- PE/N screw clamps depending on design
- Generous wiring space
- Strain relief feature
- 12+2 modules per row
- For devices up to 63 A
- Including metal frame and door in white
- Material: PS, recyclable / door and frame - sheet steel, high quality powder-coated



Item No.	Type	Design	H x W x D (mm)	Colour	SU	CB	PL
7210028	UPV12+2ST	1-row, 12+2 modules, with metal frame and door	400 x 365 x 98	grey/white	1	1	90
7210029	UPV24+4ST	2-row, 24+4 modules, with metal frame and door	525 x 365 x 98	grey/white	1	1	60
7210030	UPV36+6ST	3-row, 36+6 modules, with metal frame and door	650 x 365 x 98	grey/white	1	1	45
7210031	UPV48+8ST	4-row, 48+8 modules, with metal frame and door	775 x 365 x 98	grey/white	1	1	45

Cavity wall small distributor JUMBO with screw clamp

- For installation in cavity walls
- PE/N screw clamps depending on design
- Generous wiring space
- Strain relief feature
- 12+2 modules per row
- For devices up to 63 A
- Including metal frame and door
- Material: PS, recyclable



Item No.	Type	Design	H x W x D (mm)	Colour	SU	CB	PL
7230015	HVV12+2ST	1-row, 12+2 modules, with metal frame and door	400 x 365 x 98	white	1	1	90
7230016	HVV24+4ST	2-row, 24+4 modules, with metal frame and door	525 x 365 x 98	white	1	1	60
7230017	HVV36+6ST	3-row, 36+6 modules, with metal frame and door	650 x 365 x 98	white	1	1	45
7230018	HVV48+8ST	4-row, 48+8 modules, with metal frame and door	775 x 365 x 98	white	1	1	45

Terminal fitting JUMBO

Item No.	Type	Design	JUMBO			
			12+2	24+4	36+6	48+8
9910011	SKN34	N plug terminal, screw connections: 6 x 25 mm ² + plug connections: 28 x 4 mm ²			1 x	1 x
9910012	SKPE34	PE plug terminal, screw connections: 6 x 25 mm ² + plug connections: 28 x 4 mm ²			1 x	1 x
9910010	SKN17PE	PE-N plug terminal, screw connections: 3 x 25 mm ² each, + 14 x 4 mm ²	1 x	1 x		
9910009	SKN17N	N-N plug terminal, screw connections: 3 x 25 mm ² each, + plug connections: 14 x 4 mm ²			1 x	1 x
7290002	160030	RCD screw clamp, 3 x 16 mm ² + 2 x 10 mm ²	1 x	1 x		

info



Cover strips, universal

- Self-extinguishing up to 850°C – therefore suitable for all types of distributors
- Material: PS, recyclable

Item No.	Type	Design	Colour	SU	CB	PL
7290032	ADS12W	12 modules	white	10	500	16.000
7290031	ADS12GR	12 modules	grey	10	500	16.000



TSV

Accessories JUMBO

Item No.	Type	Design	SU	CB	PL
7220086	TSV	Key lock with two keys	1	20	8.400
7290097	MK-SET	Wall claw set (4 pieces)	1	10	8.400
7290098	MH-SET	Mounting bracket set for UP assembly (4 pieces)	1	30	2.160
7290107	VK-SET	Connection clasp set (2 pieces)	1	30	5.760
7290079	HWA-SET	Cavity wall anchor set (4 pieces)	1	10	2.880
7290090	T+RJUMBO12+2	Door and frame for Jumbo distributor single row	1	12	96
7290091	T+RJUMBO24+4	Door and frame for Jumbo distributor double row	1	12	96
7290092	T+RJUMBO36+6	Door and frame for Jumbo distributor triple row	1	12	48
7290093	T+RJUMBO48+8	Door and frame for Jumbo distributor four rows	1	12	24



Wall claw



Mounting bracket



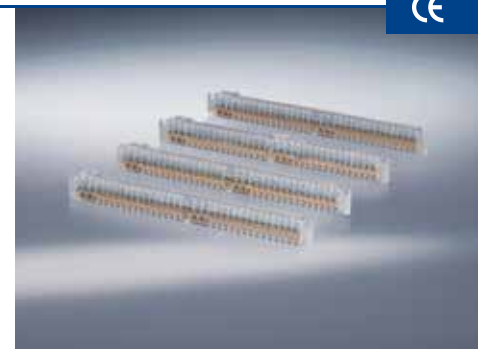
Plug terminals

Item No.	Type	Design		SU	CB	PL
9910009	SKN17N	N-N plug terminal, screw connections: 3 x 25 mm ² , plug connections: 14 x 4 mm ²	blue	1	20	1.440
9910010	SKN17PE	PE-N plug terminal, screw connections: 3 x 25 mm ² , plug connections: 14 x 4 mm ²	blue/ yellow	1	20	1.440
9910011	SKN34	N plug terminal, screw connections: 6 x 25 mm ² , plug connections: 28 x 4 mm ²	blue	1	20	1.440
9910012	SKPE34	PE plug terminal, screw connections: 6 x 25 mm ² , plug connections: 28 x 4 mm ²	yellow	1	20	1.440
7110238	PEN310	PEN bridge, blue, 10 mm ² , 310 mm	blue	1	20	4.320
7110239	N14	N plug terminal, 14-pole	blue	1	10	4.000



Screw clamps

Item No.	Type	Design		SU	CB	PL
7290084	PEN143-2	PE/N clamp, 2 connections for 3 x 16 mm ² each and 14 x 10 mm ²		1	20	1.440
7290083	PE286-1	PE clamp, connections for 6 x 16 mm ² and 28 x 10 mm ²		1	20	1.440
7290081	N286-1	N clamp, connections for 6 x 16 mm ² and 28 x 10 mm ²		1	20	1.440
7290082	NN143-2	NN clamp, 2 connections for 3 x 16 mm ² each and 14 x 10 mm ²		1	20	1.440
7290002	160030	RCD clamp for 3 x 16 mm ² and 2 x 10 mm ²		1	30	8.400



Triple socket

- Offers space for 3 euro plugs
- Mains plug can optionally be plugged in horizontally or vertically
- Suitable for all f-tronic distributors of the JUMBO and VISION series
- Material: PS, recyclable

Item No.	Type	Design	Colour	SU	CB	PL
7290113	STECKD3	Triple socket for f-tronic distributors JUMBO and VISION	white	1	32	1.280



More space for your communication – the JUMBO K

“To do justice to the importance of the Internet for multimedia applications (including telephony), an application-neutral communication cable system may be necessary.” (DIN 18015 Part 2). An installed communication distributor is an equipment criteria for an electric installation in accordance with RAL-RG 678 and therefore acts like a business card for future-oriented electric installations by the trade.

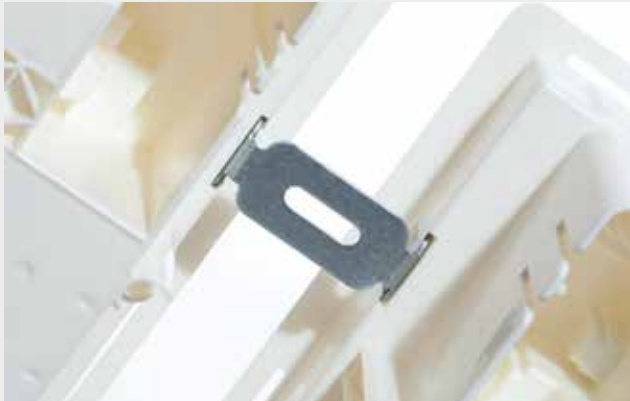
With the communication distributor JUMBO K for cavity wall and flush-mount installation, f-tronic offers to install trend-setting and standard-compliant technology for multimedia applications such as telecommunications and BK distributors for installers and construction managers. In addition to the JUMBO distributors, f-tronic offers the communication distributor in 3-row or 4-row design, suited for both flush-mounted and cavity wall installations. The communication distributors functionally complement our full small distributors series for the distribution of the electrical circuit. In addition the installer allows the construction manager convenient access to the hardware components, e.g. modem, wireless router, or Switch. The supply with mains voltage thanks to the standard triple socket with offset arranged slots is guaranteed. A space-saving use of transformer plugs is easily possible due to the arrangement of the slots. A construction manager will appreciate this tidy solution from f-tronic. The thermal loss in the distributor dissipates via the ventilation slots in the door.

The communication distributors from f-tronic meet all the provisions of DIN 18015-1 through DIN 18015-4. At the same time, comfort and allow for access to the hardware components at any time they guarantee a high level of installation.

- Plus 50% wiring space compared to conventional small distributors: upper connection space 165 mm, plus lateral wiring room
- Optimized heat dissipation through integrated air vents
- Strain relief options above and below
- Integrated bubble levels to align the wall box
- Plastic base plate for easy mounting
- incl. HWA set and connection clamps (2 pieces)



Future-orientated installation technology – the JUMBO K



The connection clasp set included allows for vertical or horizontal side by side arrangement. This way communication distributors and circuit distributors can be combined with out any problems. Clasp set included.



The patch panel integrated in the upper part allows for simple installation of patch modules in the „Keystone-Format!“.



The hardware components are fixed to the plastic equipment racks, potential-free, and supplied from the mains via the triple socket.



The built-in bubble levels on the front and back allow fast and exact alignment of the distributor.

Communication distributors JUMBO K for FM (flush-mounted) and CW (cavity wall)

- Material: PS, recyclable / door and frame - sheet steel, high quality powder-coated/Patch panel - steel

Item No.	Type	Design	H x W x D (mm)	Colour	SU	CB	PL
7250027	JUMBO36K	For FM (flush-mounted) and CW (cavity wall) installations, 3-row, with patch panel, mounting plate and 3-way electric socket including HWA-und Verbindungsklammer-Set (je 2 Stück)	650 x 365 x 98	white	1	1	45
7250033	JUMBO48K	For FM (flush-mounted) and CW (cavity wall) installations, 4-row, with patch panel, mounting plate and 3-way electric socket including HWA-und Verbindungsklammer-Set (je 2 Stück)	775 x 365 x 98	white	1	1	45
7290113	STECKD3	Triple socket for f-tronic distributors JUMBO and VISION		white	1	32	1.280
7290116	PATCH12	Patch panel for easy mounting of patch modules in the „Keystone-Format“	k. A.	k. A.	1	20	960
7290094	T+R JUMBO36K	Door and frame for Jumbo K Distributor 3-row	k. A.	k. A.	1	12	48
7290095	T+R JUMBO48K	Door and frame for Jumbo K Distributor 4-row	k. A.	k. A.	1	12	24

Small distributors

* With metal frame and door



Our VISION for your future installations

This wall-mounted distributor series leaves nothing to be desired. Seven cable inlet possibilities each in the top, middle and bottom connection space enormously simplify reconstruction work. A large wiring space behind the hat profile rail is a given, just as the additional lateral wiring space. In addition, this distributor series offers a plastic rail in the upper and lower connection space for strain relief of the inserted cables. The distributors are optionally equipped with screw clamps or plug terminals for PE and N conductor connections which exceed the requirements specified in DIN 43871.

The attractive and comparably stable covering cap offers additional lateral wiring inlet openings, also making lateral insertions possible, with no trouble at all. In addition to numerous door systems made from steel sheet or plastic, the doors can also be locked with an additional plug lock.

Advantages at a glance

- Large wiring space
- PE/N-plug terminal included in the scope of delivery
- Strain relief feature for inserted cables at top and bottom
- Cable inlet possibilities in the top, middle and bottom connection frame
- Various door systems made from metal or plastic

12+2 24+4 36+6 48+8



	APV12+2	APV24+2	APV36+6	APV48+8
Height mm	250	375	515	640
Width mm	305	305	305	305
Depth mm	99	99	99	99

Wall-mounted small distributors VISION with plug terminal

- 12+2 modules per row
- Cable inlets on all sides
- Generous wiring space
- Strain relief feature
- For devices up to 63 A
- Material: PS, recyclable

Item No.	Type	Design	H x W x D (mm)	Colour	SU	CB	PL
7220044	APV12+2	1-row, 12+2 modules, with plug terminal PE/N and RCD screw clamp, housing without door	250 x 305 x 99	white	1	12	144
7220050	APV24+4	2-row, 24+4 modules, with plug terminal PE/N and RCD screw clamp, housing without door	375 x 305 x 99	white	1	8	96
7220056	APV36+6	3-row, 36+6 modules, with plug terminal PE/N and N/N, housing without door	515 x 305 x 99	white	1	6	72
7220061	APV48+8	4-row, 48+8 modules, with plug terminal PE/N and N/N, housing without door	640 x 305 x 99	white	1	5	60



Wall-mounted small distributors VISION with screw clamp

- 12+2 modules per row
- Cable inlets on all sides
- Generous wiring space
- Strain relief feature
- For devices up to 63 A
- Material: PS, recyclable

Item No.	Type	Design	H x W x D (mm)	Colour	SU	CB	PL
7220045	APV12+2PEN	1-row, 12+2 modules, with screw clamp PE/N, housing without door	250 x 305 x 99	white	1	12	144
7220051	APV24+4PEN	2-row, 24+4 modules, with screw clamp PE/N, housing without door	375 x 305 x 99	white	1	8	96
7220057	APV36+6PEN	3-row, 36+6 modules, with screw clamp PE/N, housing without door	515 x 305 x 99	white	1	6	72
7220062	APV48+8PEN	4-row, 48+8 modules, with screw clamp PE/N, housing without door	640 x 305 x 99	white	1	5	60



Terminal fitting VISION

Item No.	Type	Design	VISION	VISION	VISION	VISION
			12+2	24+4	36+6	48+8
9910011	SKN34	N plug terminal, screw connections: 6 x 25 mm ² + plug connections: 28 x 4 mm ²			1 x	1 x
9910012	SKPE34	PE plug terminal, screw connections: 6 x 25 mm ² + plug connections: 28 x 4 mm ²			1 x	1 x
9910010	SKN17PE	PE-N plug terminal, screw connections: 3 x 25 mm ² each, + 14 x 4 mm ²	1 x	1 x		
9910009	SKN17N	N-N plug terminal, screw connections: 3 x 25 mm ² each, + plug connections: 14 x 4 mm ²			1 x	1 x
7290002	160030	RCD screw clamp, 3 x 16 mm ² + 2 x 10 mm ²	1 x	1 x		





Door system for wall-mounted small distributors VISION

- The right doors for our wall-mounted small distributors VISION
- Execution white in gloss plastic or metal
- Including snap fit, optional with key lock
- Left / right attachment possible
- Material: Door made of metal - steel sheet, high-quality powder-coated
- Material: Door made of plastic - PC, recyclable



Item No.	Type	Design	Colour	SU	CB	PL
7220046	APV12+2TM	Door made of metal, for 1-row VISION distributor	white	1	10	560
7220052	APV24+4TM	Door made of metal, for 2-row VISION distributor	white	1	10	320
7220058	APV36+6TM	Door made of metal, for 3-row VISION distributor	white	1	20	160
7220063	APV48+8TM	Door made of metal, for 4-row VISION distributor	white	1	40	160
7220048	APV12+2TW	Door made of plastic, glossy, for 1-row VISION distributor	white	1	10	560
7220054	APV24+4TW	Door made of plastic, glossy, for 2-row VISION distributor	white	1	15	480
7220060	APV36+6TW	Door made of plastic, glossy, for 3-row VISION distributor	white	1	20	160
7220065	APV48+8TW	Door made of plastic, glossy, for 4-row VISION distributor	white	1	40	160



Triple socket

- Offers space for 3 euro plugs
- Mains plug can optionally be plugged in horizontally or vertically
- Suitable for all f-tronic distributors of the JUMBO and VISION series
- Material: PS, recyclable

Item No.	Type	Design	Colour	SU	CB	PL
7290113	STECKD3	Triple socket for f-tronic distributors JUMBO and VISION	white	1	32	1.280



Cover strips, universal

- Self-extinguishing up to 850 °C – therefore suitable for all types of distributors
- Material: PS, recyclable

Item No.	Type	Design	Colour	SU	CB	PL
7290032	ADS12W	12 modules	white	10	500	16.000
7290031	ADS12GR	12 modules	grey	10	500	16.000



Key lock with two keys

Item No.	Type	Design	SU	CB	PL
7220086	TSV	Key lock with two keys	1	20	8.400



Plug terminals

Item No.	Type	Design	SU	CB	PL
9910009	SKN17N	N-N plug terminal, screw connections: 3 x 25 mm ² , plug connections: 14 x 4 mm ²	1	20	1.440
9910010	SKN17PE	PE-N plug terminal, screw connections: 3 x 25 mm ² , plug connections: 14 x 4 mm ²	1	20	1.440
9910011	SKN34	N plug terminal, screw connections: 6 x 25 mm ² , plug connections: 28 x 4 mm ²	1	20	1.440
9910012	SKPE34	PE plug terminal, screw connections: 6 x 25 mm ² , plug connections: 28 x 4 mm ²	1	20	1.440
7110238	PEN310	PEN bridge, blue, 10 mm ² , 310 mm	1	20	4.320
7110239	N14	N plug terminal, 14-pole	1	10	4.000



Screw clamps

Item No.	Type	Design	SU	CB	PL
7290084	PEN143-2	PE/N clamp, 2 connections for 3 x 16 mm ² each and 14 x 10 mm ²	1	20	1.440
7290083	PE286-1	PE clamp, connections for 6 x 16 mm ² and 28 x 10 mm ²	1	20	1.440
7290081	N286-1	N clamp, connections for 6 x 16 mm ² and 28 x 10 mm ²	1	20	1.440
7290082	NN143-2	NN clamp, 2 connections for 3 x 16 mm ² each and 14 x 10 mm ²	1	20	1.440
7290002	160030	RCD clamp for 3 x 16 mm ² and 2 x 10 mm ²	1	30	8.400





Wall-mounted automatic boxes

- For devices up to 63 A
- With rear wall
- With fitted standard profile rail
- Material: PS, recyclable

Item No.	Type	Design	H x W x D (mm)	Colour	SU	CB	PL
7260010	KV02	2 modules without terminals	140 x 50 x 65	white	1	192	3.072
7260011	KV02K	2 modules with 2-pole PE/N terminals	140 x 50 x 65	white	1	192	3.072
7260012	KV04	4 modules without terminals	160 x 94 x 65	white	1	84	1.344
7260013	KV04K	4 modules with 4-pole PE/N terminals	160 x 94 x 65	white	1	84	1.344
7260014	KV06	6 modules without terminals	160 x 140 x 65	white	1	56	896
7260015	KV06K	6 modules with 6-pole PE/N terminals	160 x 140 x 65	white	1	56	896

f-tronic distribution boards

The quick and safe way to the right distribution board

The multitude of requirements stipulated by energy supply companies in Germany makes the correct project planning for distribution boards very difficult for electricians. Errors in planning and project implementation are quickly made. Coordination often takes a lot of effort and time and is difficult. Errors in layout and project planning can result in delays, non-acceptance or, at worst, new installations. This is where we come in; we will take over this task with our experience and our excellent contacts with energy suppliers.

Advantages at a glance

- Swift processes, competent project managers and a project software allow us to work out the distribution boards exactly to the requirements of the artisans, taking the various provisions of local energy suppliers into account.
- In only a few days, we can plan distribution boards according to the structural requirements of all energy suppliers; we prepare clearly arranged documentation, manufacture fully-equipped boards in our plant in Saarbrücken and deliver to the wholesale of your choice. In very urgent cases we can even come to your construction site.
- Our service provides secure planning for the electrician's construction site and wholesale purchasing significantly lowers storage costs. Large inventories due to the multitude of variants no longer apply.

Find the perfect technical solution in our Distribution Boards brochure.



VISION K

The DIN 18015 Part 2 clearly instructs the trade: “To do justice to the importance of the Internet for multimedia applications (including telephony), an application-neutral communication cable system may be necessary.” (DIN 18015 Part 2). A communication distributor is an equipment criteria for an electric installation in accordance with RAL-RG 678 and therefore acts like a business card for future-oriented electric installations by the trade.

With the communication distributor VISION K, f-tronic offers electricians and constructors a future-oriented technology, which meets technical standards, for the installation of multi-media applications, e.g. telecommunication and BC distribution in a wall-mounted distributor. In addition to the VISION circuit distributors, f-tronic offers the communication distributor in 3-row or 4-row design for wall-mounted installations.

The patch panel integrated in the upper part allows for simple installation of patch modules. The hardware components such as modem, wireless router, or switch are fixed floating on the plastic carrier plate. The built-in hardware components are supplied via the standard triple socket with mains voltage. The optimal arrangement allows you to save space using transformer plugs. The communication distributors functionally complement our full small distributors series for the distribution of the electrical circuit. The thermal loss in the distributor dissipates via the ventilation slots in the door.

The communication distributors from f-tronic meet all the provisions of DIN 18015-1 through DIN 18015-4. At the same time, they guarantee a high level of installation comfort and allow for access to the hardware components at any time.

- Large wiring space
- Strain relief opportunities for imported lines above and below
- Rear cable entry points in the upper, middle and lower area
- Plastic base plate for easy mounting





The hardware components are fixed to the plastic equipment racks, potential-free, and supplied from the mains via the triple socket.



The patch panel integrated in the upper part allows for simple installation of patch modules in the „Keystone-Format“.

Wall-mounted communication distributors VISION K

- Material: PS, recyclable / door and frame - sheet steel, high quality powder-coated
Patch panel - steel

Item No.	Type	Design	H x W x D (mm)	Colour	SU	CB	PL
7220087	APV36K	for on-wall installation 3-row, with patch panel, mounting plate, 3-way electric socket and door made of metal	515 x 305 x 99	white	1	6	72
7220088	APV48K	for on-wall installation 4-row, with patch panel, mounting plate, 3-way electric socket and door made of metal	640 x 305 x 99	white	1	5	60
7290113	STECKD3	Triple socket for f-tronic distributors JUMBO and VISION		white	1	32	1.280
7290116	PATCH12	Patch panel for easy mounting of patch modules in the „Keystone-Format“			1	20	960



Robust damp area small distributors IP 65

With these modular small distributors we offer robust, resistant products for difficult installation environments in industrial plants, workshops, cellars or garages. The housing is suitable for use in a sheltered outdoor area, according to the protection rating. When used in unprotected outdoor areas, the casing must be protected against weather-related stress such as rain, ice, snow, or UV radiation by installation in an outdoor housing.

The IP 65 EN 60 529/DIN VDE 0470 distributors consist of impact-resistant plastic and are suited for devices up to 63 A.

The system housings can be combined with each other. The APV14AR to APV56AR models are also available with 150 mm extra connection space, should you require additional space for incoming and outgoing cables. These AR models are perfectly suited for the installation of built-in sockets for use as robust socket distributors.

Advantages at a glance

- Large space for comfortable installation
- Available from compact 4-module to large 70-module units
- Also available with additional connection space
- With integrated level for aligning the distributor during installation
- For industrial halls, workshops, garages and cellars
- Cable cover, standard from APV 14



Damp area small distributors IP 65

Also available with additional 150 mm connection space. The 1-row to 4-row distributors of the AR series are equipped with additional connection space.



Available from 4 to 70 modules – the robust damp area small distributors from f-tronic.



Additional connection space for AR models. Suitable for example for construction of socket distributors.



The integrated level allows for quick aligning of the distributor during installation.



IP 55 damp area small distributors

- Splash-proof design
- Small distributor for devices up to 63 A
- Upper and lower section of high-quality plastic
- Door made of transparent, impact-resistant and weather-proof plastic
- Ideal for difficult installation environments in industrial plants, repair shops, basements or garages
- Suitable for applications in a sheltered outdoor area, according to the degree of protection
- For applications in unprotected outdoor areas, the housing must be protected against weather-related stress through installation in an outdoor housing
- Including PE/N terminals
- Including M20/M25/M32 double membrane nipples
- Material: PS, recyclable / door: PC clear glass, recyclable

Item No.	Type	Design	H x W x D (mm)	Colour	SU	CB	PL
7240050	KV04WDKE	1-row, 4 modules, with M20 cable inlets	180 x 125 x 90	grey	1	50	600
7240051	KV06WDKE	1-row, 6 modules, with M20 cable inlets	180 x 160 x 90	grey	1	40	480
7240052	KV10WDKE	1-row, 10 modules, with M20/M25 cable inlets	180 x 230 x 90	grey	1	25	300

Damp area small distributors IP 65

- Small distributor for devices up to 63 A
- Robust design made from impact-resistant plastic
- With integrated level for quick and professional alignment (from APV 14)
- Interchangeable single doors in smoke topaz for the far right and left, also lockable upon request
- Also available with transparent door on request
- Several system housings can be fitted in series and combined as required
- Ideal for difficult installation environments in industrial plants, repair shops, basements or garages
- Suitable for applications in a sheltered outdoor area, according to the degree of protection
- For applications in unprotected outdoor areas, the housing must be protected against weather-related stress through installation in an outdoor housing
- Including PE/N screw clamps, optionally, RCD-2 circle clamp is available
- Including M20/M25/M32 double membrane nipples
- Including Cable cover (from APV 14)
- Sealable
- Material: PS, recyclable, door PC smoky Topaz, recyclable

Item No.	Type	Design	H x W x D (mm)	Colour	SU	CB	PL
7240026	APV4	1-row, 1 x 4+1 modules	197 x 122,5 x 120	grey	1	210	420
7240031	APV6	1-row, 1 x 6+1 modules	200 x 160 x 120	grey	1	165	330
7240022	APV14	1-row, 1 x 12+2 modules	300 x 300 x 142	grey	1	1	90
7240024	APV28	2-row, 2 x 12+2 modules	450 x 300 x 142	grey	1	1	60
7240027	APV42	3-row, 3 x 12+2 modules	600 x 300 x 142	grey	1	1	48
7240029	APV56	4-row, 4 x 12+2 modules	750 x 300 x 142	grey	1	1	40
7240032	APV70	5-row, 5 x 12+2 modules	900 x 300 x 142	grey	1	1	30

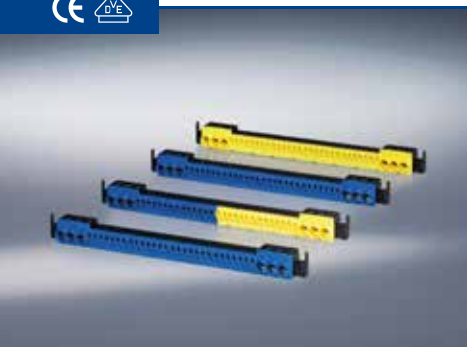


Damp area small distributors IP 65 – with additional connection space - AR

- Additional 150 mm connection space for incoming and outgoing cables
- Small distributor for devices up to 63 A
- Robust design made from impact-resistant plastic
- With integrated level for quick and professional alignment (from APV 14)
- Interchangeable single doors in smoke topaz for the far right and left, also lockable upon request
- Also available with transparent door on request
- Several system housings can be fitted in series and combined as required
- Ideal for difficult installation environments in industrial plants, repair shops, basements or garages
- Suitable for applications in a sheltered outdoor area, according to the degree of protection
- For applications in unprotected outdoor areas, the housing must be protected against weather-related stress through installation in an outdoor housing
- Including PE/N screw clamps, optionally, RCD-2 circle clamp is available
- Including M20/M25/M32 double membrane nipples
- Including Cable cover (from APV 14)
- Sealable
- Material: PS, recyclable

Item No.	Type	Design	H x W x D (mm)	Colour	SU	CB	PL
7240023	APV14AR	1-row, 1 x 12+2 modules	450 x 300 x 142	grey	1	1	60
7240025	APV28AR	2-row, 2 x 12+2 modules	600 x 300 x 142	grey	1	1	48
7240028	APV42AR	3-row, 3 x 12+2 modules	750 x 300 x 142	grey	1	1	40
7240030	APV56AR	4-row, 4 x 12+2 modules	900 x 300 x 142	grey	1	1	30





Plug terminals

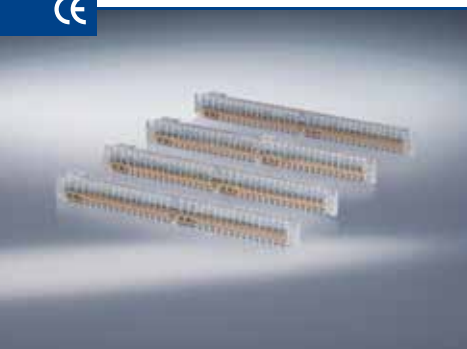
Item No.	Type	Design	SU	CB	PL
9910009	SKN17N	N-N plug terminal, screw connections: 3 x 25 mm ² , plug connections: 14 x 4 mm ²	1	20	1.440
9910010	SKN17PE	PE-N plug terminal, screw connections: 3 x 25 mm ² , plug connections: 14 x 4 mm ²	1	20	1.440
9910011	SKN34	N plug terminal, screw connections: 6 x 25 mm ² , plug connections: 28 x 4 mm ²	1	20	1.440
9910012	SKPE34	PE plug terminal, screw connections: 6 x 25 mm ² , plug connections: 28 x 4 mm ²	1	20	1.440
7110238	PEN310	PEN bridge, blue, 10 mm ² , 310 mm	1	20	4.320
7110239	N14	N plug terminal, 14-pole	1	10	4.000



Clamp adapter for IP 65

- Adapter required for all clamping installations in IP 65 damp area distributors

Item No.	Type	Design	SU	CB	PL
7290111	KAIP65	Terminal adapter set (2 pieces) for damp area distributors (terminals not included in scope of delivery)	1	10	7.680



Screw clamps

Item No.	Type	Design	SU	CB	PL
7290084	PEN143-2	PE/N clamp, 2 connections for 3 x 16 mm ² each and 14 x 10 mm ²	1	20	1.440
7290083	PE286-1	PE clamp, connections for 6 x 16 mm ² and 28 x 10 mm ²	1	20	1.440
7290081	N286-1	N clamp, connections for 6 x 16 mm ² and 28 x 10 mm ²	1	20	1.440
7290082	NN143-2	NN clamp, 2 connections for 3 x 16 mm ² each and 14 x 10 mm ²	1	20	1.440
7290002	160030	RCD clamp for 3 x 16 mm ² and 2 x 10 mm ²	1	30	8.400



Cover strips, universal

- Self-extinguishing up to 850 °C – therefore suitable for all types of distributors
- Material: PS, recyclable

Item No.	Type	Design	Colour	SU	CB	PL
7290032	ADS12W	12 modules	white	10	500	16.000
7290031	ADS12GR	12 modules	grey	10	500	16.000

Damp area small distributors, accessories

Twisted nipples IP 54

- Material: PVC

Item No.	Type	Design	Colour	SU	CB	PL
7290086	STM25	Twisted nipple M25	grey	20	800	51.200
7290087	STM32	Twisted nipple M32	grey	20	600	38.400
7290088	STM40	Twisted nipple M40	grey	20	400	25.600



Double membrane nipples IP 65

- Material: PVC

Item No.	Type	Design	Colour	SU	CB	PL
7290059	DMS20	Double membrane nipples M20	grey	20	1.000	64.000
7290060	DMS25	Double membrane nipples M25	grey	20	800	51.200
7290061	DMS32	Double membrane nipples M32	grey	20	600	38.400



Accessories and spare parts for damp area distributors IP 65

- Material: Replacement doors - PC smokey Topaz, recyclable

Item No.	Type	Design	Colour	SU	CB	PL
7240060	TS1	Replacement door including hinges	smoked topaz	1	15	960
7290114	APV4T	Replacement door for APV4	smoked topaz	1	12	3.072
7290115	APV6T	Replacement door for APV6	smoked topaz	1	7	2.240
7240059	TS3	Key lock, complete		1	20	8.400

